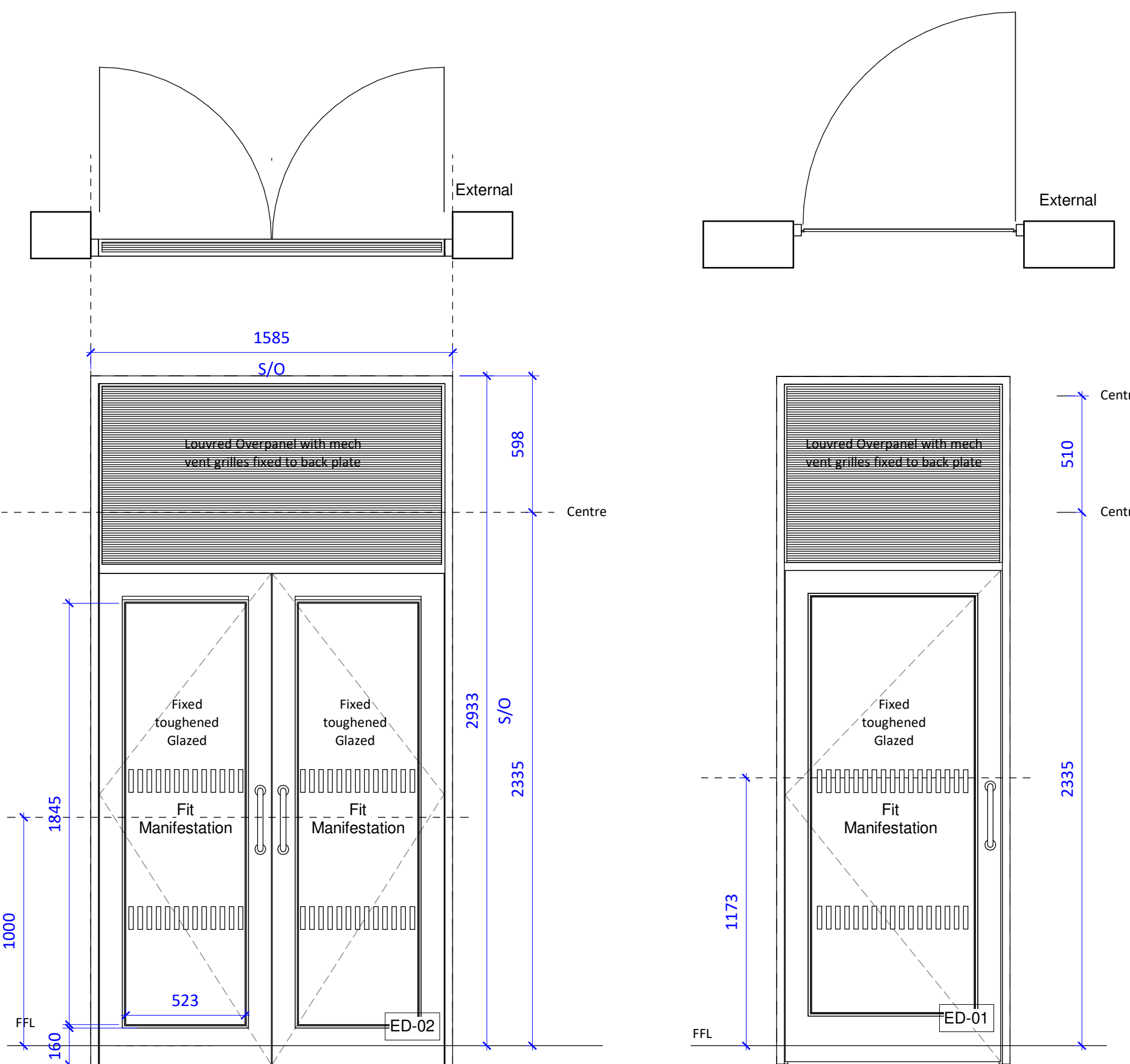


External Aluminium Doors to Rear Extension



Type 1: Secondary Entrance

Ironmongery
 Opening: Auto Opening with wall mounted Push pad to activate automation on both sides of door
 Guarding: Guarding hoops are to be fitted to pavement on both sides of the door. Chevron brick line to be fitted below the guarding to provide cane detection to pavement
 Green break glass to be installed to door internally connected to Fire alarm
 Handles: 400mm Satin Chrome handles to both leaves both sides etched Push Pull
 Locking: Europrofile cylinder (Client to confirm if suiting is required)
 Closers: Satin Chrome overhead door closers
 Hinges: Manufacturers proprietary
 Manifestations: To be fitted

Type 2: Secondary Entrance and Means of Escape

Ironmongery
 Opening: Manual Opening more than 90 degrees
 Guarding: Guarding hoops are to be fitted to pavement on hinge side of door. Chevron brick line to be fitted below the guarding to provide cane detection to pavement
 Handles: 400mm Satin Chrome handles to both sides etched Push Pull
 Locking: Europrofile cylinder (Client to confirm if suiting is required)
 Closers: Satin Chrome overhead door closer
 Hinges: Manufacturers proprietary
 Manifestations: To be fitted

Glass Specification: Solar Control required to doors providing escape from rooms

28mm Double Glazed units.
 Outer: 6mm Pilkington SunCool 70/35 OW - Toughened
 16mm Swiss V Spacer - 90% Argon filled
 Inner: 6mm Pilkington OptiFloat - Laminated
 G Factor 37%
 Light Transmittance 69%
 Total Shading Coefficient 43%
Toughened safety glass to be provided in accordance with Part K diag 5.1.:-
 All doors within 1500m of FFL
 All glass to side panes to doors or in windows within 300mm vertically where siding a door
Manifestations to conform to Part M of the Building Regulations
 Rectangular MF011 Frosted Sticks

Louvre Specification to Overpanels:

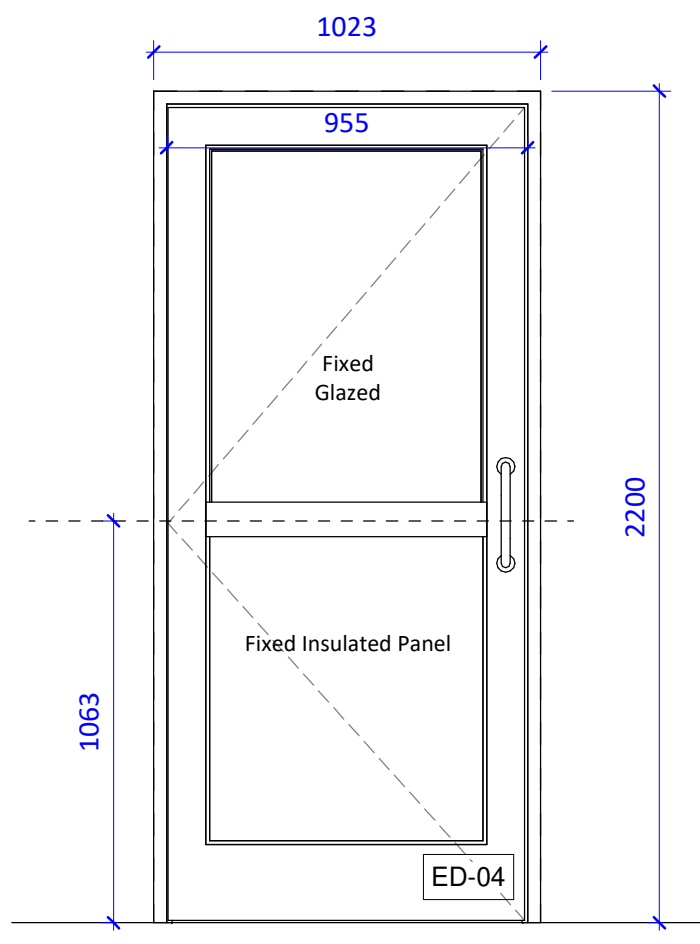
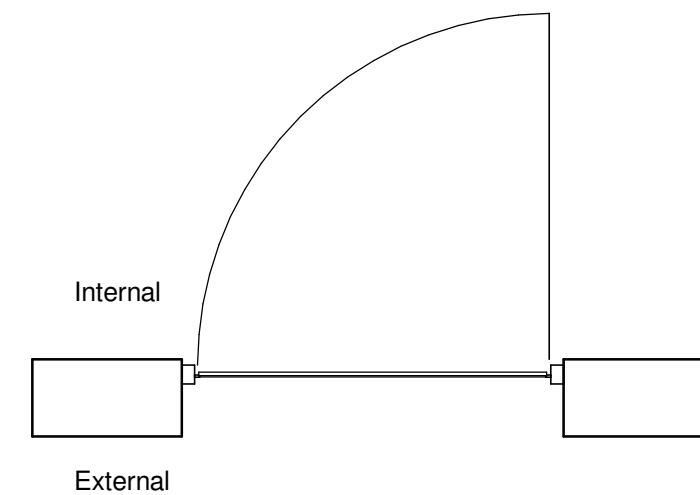
Louvres to be fitted to overpanels to these two doors, and fitted with blanking panels to the rear face to allow mechanical plenums to be fixed as part of the Mechanical installation
 Metal Technology system 23: P50 (51% Free Area)
 Free area reduces to 43% due to Insect mesh.

Threshold strips to Entrance doors to be Part M compliant

EXTERNAL ALUMINIUM ENTRANCE DOORS: SPECIFICATION

Framing: Polyester Powder Organic Coated Aluminium to BS EN 12206-1. Colour RAL 7012
Manufacturer: Entrance Doors
 ALUK or equivalent:
 Metal Technology GT55 TB Commercial Door for Entrances
 All Glazed doors will be high usage with built in anti-finger trap styles
 To be read in conjunction with drawings A3-001

All glazed entrance doors are to be fitted with Electro mechanical locks (CLIENT TO CONFIRM)
 Manufacturer to allow for wireways through transoms/mullions for wiring to be brought to the heads of doors.
 Closer: Fit with DDA compliant overhead closer
 ED-01 to be Manual opening
 ED-03 to be fitted with Auto Opening mechanism
Performance:
 Single Door - Double glazed 1.9 w/m²k U value
 Double Door - Double glazed 1.82w/m²k U value
 Acoustics: npd
 Air tightness (Pa) Class 0 (0 Pa)
 Water tightness: Class 1A (0 Pa)
 Wind load: Class 0 (0 Pa)
 Security: Q mark
Security
 Doors achieve PAS 24 enhanced security and are Secure by Design compliant
Construction
 Frame depth: 110mm
 Fitted with Low threshold
 Max door leaf size 1250 x 2400mm Single & 2500 x 2400mm Double
 Max door leaf weight 110kg
 Locking: Multi point
Fixing: in accordance with manufacturers recommendations using cramps to Internal Block leaf
 Frame must oversail external brickwork (inner) by 30mm to prevent cold bridging



Type 2: Secondary Entrance and Means of Escape

Ironmongery
 Opening: Manual Opening inward more than 90 degrees
 Guarding: No guarding hoops required.
 Handles: 300mm Satin Chrome handles with push plate to reverse side.
 Locking: Europrofile cylinder
 Closers: not required
 Hinges: Manufacturers proprietary
 Manifestations: Not required

EXTERNAL KITCHEN DOOR: SPECIFICATION

Delivery Entrance and Means of Escape
 Framing: Polyester Powder Organic Coated Aluminium to BS EN 12206-1. Colour RAL 7012
Manufacturer: Entrance Doors
 ALUK or equivalent:
 Metal Technology Optio G58D Entrance door
 Top panel glazed
 Bottom panel to have an insulated infill panel
 To be read in conjunction with drawings A3-001
 Closer: Not required
 Door must open more than 90 degrees

Performance:

Single Door - Double glazed 1.7 w/m²k U value
 Acoustics/Fire/Smoke: npd
 Air tightness (Pa) Class 4 (600 Pa)
 Water tightness: Class 3A (100 Pa)
 Wind load: Class A3 (1200 Pa)
 Security: Q mark

Security

Doors achieve PAS 24 Secure by Design compliant
 Multi point locking mechanism

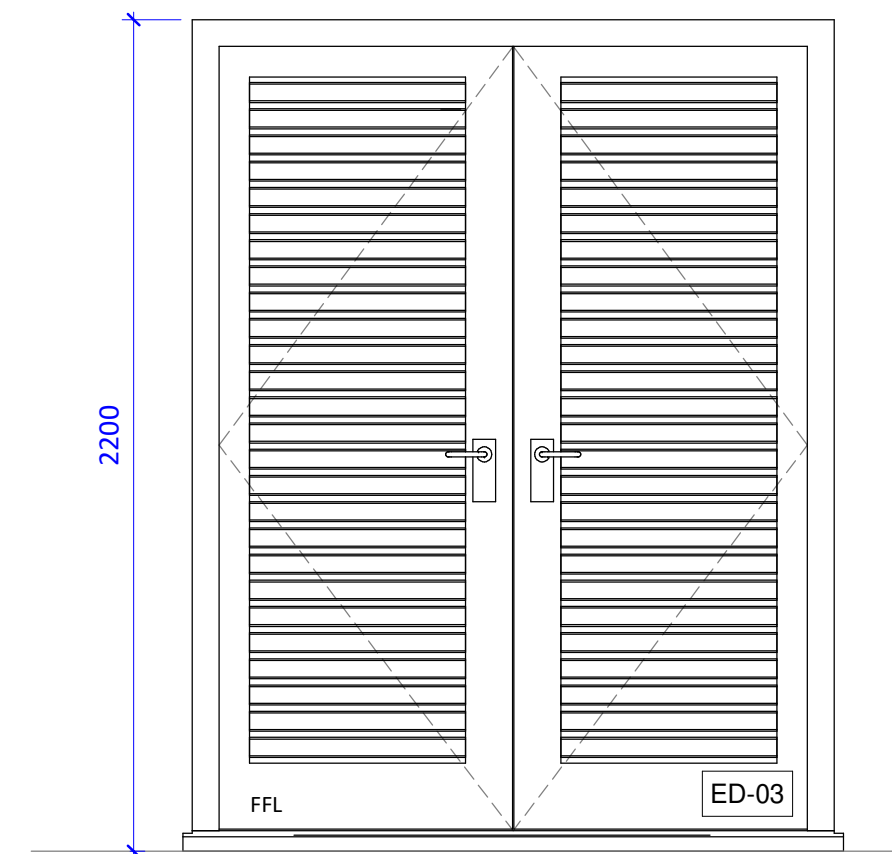
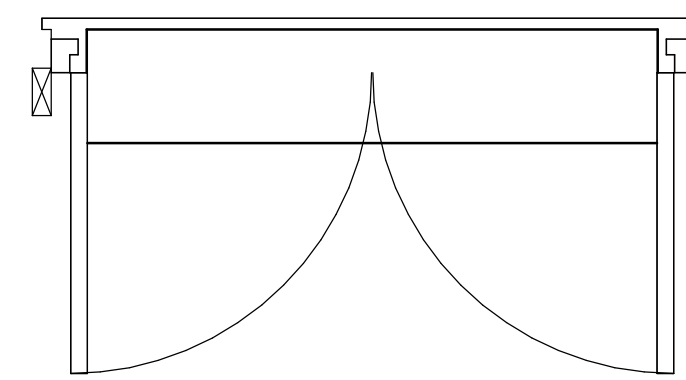
Construction

Frame depth: 70mm
 Fitted with Low threshold
 Max door leaf 1200 x 2400mm
 sightline Head 129.5mm
 Sightline Cill 111mm
 Sightline Jamb 129.5mm
Fixing: in accordance with manufacturers recommendations using cramps to Internal Block leaf
 Frame must oversail external brickwork (inner) by 30mm to prevent cold bridging

Glass Specification:

28mm Double Glazed units.
 Outer: 6mm Pilkington Toughened
 16mm Swiss V Spacer - 90% Argon filled
 Inner: 6mm Pilkington - Laminated
 Centre Pane U value should achieve 1.7 w/m²k

External Service Doors to Rear Extension



Door Type 5: Bin Store

Ironmongery
 Opening: Manual Opening outward more than 90 degrees
 Guarding: No guarding hoops required, only open when Bins emptied
 Handles: Lever handles master leaf
 Bolt: Flush bolts top and bottom
 Locking: Europrofile cylinder
 Closers: not required
 Hinges: Manufacturers proprietary
 Fastening: Hook and Eyes to be fitted to wall externally to allow doors to be clipped open whilst the bins are moved in and out.
 Manifestations: Not required

EXTERNAL BIN STORE LOUVER DOOR: SPECIFICATION

Framing: Polyester Powder Organic Coated Aluminium to BS EN 12206-1. Colour RAL 7012
Manufacturer: ALUK or equivalent:
 Metal Technology System 5-20D doors with Louvered infill panel to doors
 To be read in conjunction with drawings A3-001
 Closer: Not required
 Door must open more than 120 degrees to allow them to be hooked open when in use by bin men

Louvre Specification :

Louvres to be fitted to door panels
 Blade pitch: 50mm MT P50
 Louvre Free Area 43% required
 Metal Technology system 23: P50 (51% Free Area)
 No Insect mesh as the bin store is open to roof.

Copyright: of this drawing is vested in the Architect and it must not be copied or reproduced without consent. **Printing:** Please note that paper prints of this drawing may not be an accurate reproduction of the given scale. Key dimensions are noted for reference. Purpose: Unless marked as such drawing should not be used for Construction purposes. Detailed setting out drawings will need to be supplied for Tender and Construction purposes. Figured dimensions only are to be taken from this drawing. All Dimensions and Levels are to be checked on site, prior to commencement. All contractors are to be responsible for taking and checking all dimensions relative to their work. Dimensions are in millimetres unless otherwise stated. bpArchitecture are to be advised of any variation between drawings and site conditions. Co-Ordination This drawings is to be read in conjunction with all other consultants's drawings, specifications and schedules. CDM: Work must not start on site before a Construction Phase Health and Safety Plan is in place (if applicable). The Client is responsible for ensuring that a Principal Designer and/or Principal Contractor has been appointed and the Health and Safety executive have been notified (for projects which will involve more than 500 person days and/or will last more than 30 working days on site).....IF IN DOUBT ASK

Rev	Drawn	Comments	Date
1	BPA	For Client Comment/Sign Off	Oct 2020
2	BPA	Tender	21 Oct 2020

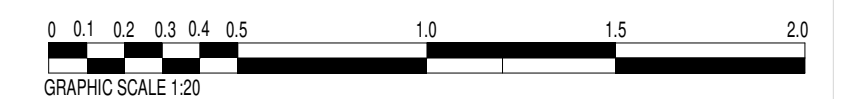
Note 1: Glazing safety

All glazing must be clear - wired glazing will not be accepted. Glazing should be designed to resist human impact as set out in BS 6262: Part 4: 2005. Glazing should be sufficiently robust to ensure the risk of breakage is low. Ensure that glazing if it breaks will break safely, in the following critical locations where all, or part, of a pane is:

- glazed screens within 800mm of FFL or
- part of a door leaf up to 1.5m from FFL or
- glazed screen within 300mm of a door leaf

Note 2: Glazed Doors and Screens

- Fit manifestation at two levels
 - That contrasts visually with the background seen through the glass (on both sides) in all lighting conditions
- Manifestation to be Rectangular MF001 Squares



Client
Nantwich Town Council
 Project
Proposed Alterations and Extension to Nantwich Civic Hall, 4 Market St, Nantwich CW5 5NF
 Title
Pictorial Schedule - External Doors

Package **3 Openings Schedules**

Dwg Stage	Dwg Status	Drawn	Checked
RIBA Stage 4B: Technical Design		MQ	BSP

Date **September 2020**
 Scale @A1 **1 : 20**

Project No	Originator	Block	Level	Type	File Element	Role	Drawing No	Rev
20-051-BPA-CH-00-SH-							A3-001	T 2

Tender