



# Talk OF THE Town

## Message from the Mayor

I would like to take this opportunity to wish you all a belated Happy New Year.

The year has not started as we would have all hoped it would with the current lockdown and many of our shops and hospitality venues closed, but hopefully there is light at the end with the rollout of the vaccines, which locally are going really well in the Civic Hall.

I would like to thank all the staff at Nantwich Town Council who have worked incredibly hard in very difficult circumstances during the pandemic and I am sure you will agree our Christmas Light display was incredible and received very favourable comments.

Thanks must also go to you all for your kind donations to the Food Bank through the drop off and go scheme organised by the Food Festival committee.

My Mayoral year has been different from all the other Mayoral years with COVID 19 and I haven't been able to meet as many of the residents as I would have wished, but the events I have attended have been very rewarding and I have met many lovely residents.

I do hope when the current restrictions are lifted everyone will support our local businesses and hospitality venues and it will be lovely to meet our families and friends and loved ones again.

I hope until then you all stay safe and well.





# Talk OF THE Town

## Councillors



### Mayor

Councillor Pam Kirkham  
35 Marsh Lane, Nantwich,  
CW5 5HP  
Tel: 01270 627999  
North & West Ward



### Deputy Mayor

Councillor Stuart Bostock  
12 Bowyer Avenue, Nantwich,  
CW5 5PS  
Tel: 01270 627702  
North & West Ward



Councillor Penny Butterill  
21 Birch Lane, Nantwich,  
CW5 6JU  
Tel: 01270 625575  
North & West Ward



Councillor David Greaves  
C/O Nantwich Civic Hall, Market Street,  
Nantwich, CW5 5DG  
Tel: 01270 618387  
South Ward



Councillor Peter Groves  
Yew Tree Close, Bulkeley,  
SY14 8DA  
Tel: 01829 720439  
South Ward



Councillor David Marren  
C/O Nantwich Civic Hall, Market Street,  
Nantwich, CW5 5DG  
Tel: 01270 569284  
South Ward



Councillor Andrew Martin  
London Road, Stapeley,  
Nantwich, CW5 7JL  
Tel: 01270 627740  
South Ward



Councillor Arthur Moran  
16 Gerard Drive, Nantwich,  
CW5 5JR  
Tel: 01270 624071  
North & West Ward



Councillor Philip Staley  
168 Audlem Road, Nantwich,  
CW5 7EB  
Tel: 01270 482642  
South Ward



Councillor John Statham  
38 Mallard Avenue, Edleston,  
Nantwich, CW5 5WE  
Tel: 07849 319522  
North & West Ward



Councillor Carole Thomas  
34 Whitewell Close, Nantwich,  
CW5 6LY  
Tel: 01270 361228  
North & West Ward



Councillor Stephanie Wedgwood  
19 Mallard Avenue, Edleston,  
Nantwich, CW5 5XF  
Tel: 07814 686377  
North & West Ward



Mrs Samantha Roberts  
Town Clerk  
Civic Hall  
Market Street  
Nantwich  
CW5 5DG  
Tel: 01270 619224

## Nantwich adopts a new Corporate Strategic Plan

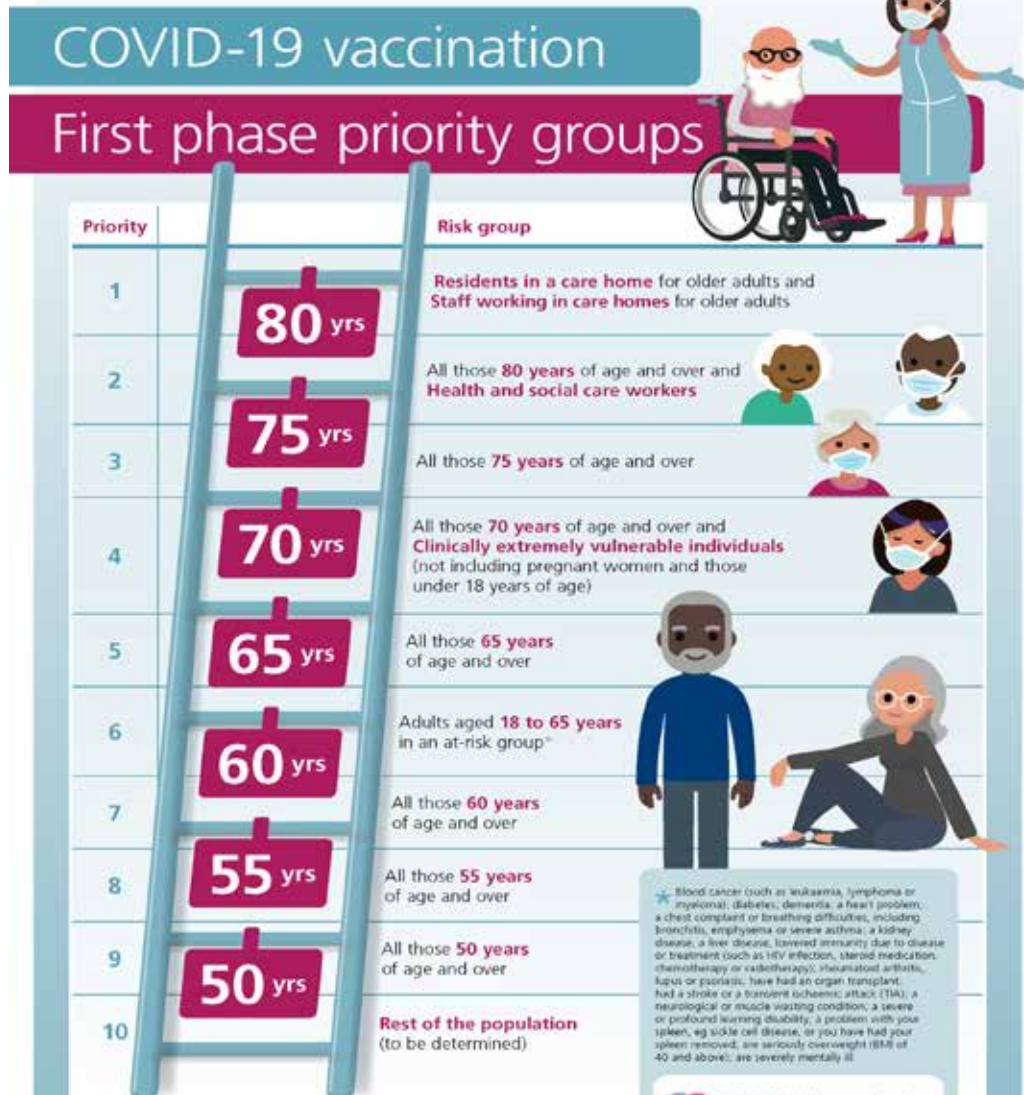
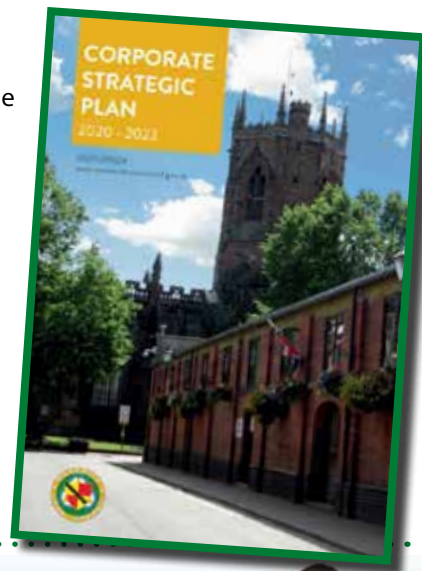
May 2019 was a significant month for Nantwich Town Council with the local elections and a fresh Council featuring five new Councillors. A new Mayor and Deputy Mayor of the Council were elected. Alongside all this the new Town Clerk, Samantha Roberts, joined the Council in September 2019.

During the months that followed we began developing the Corporate Strategic Plan for the next three years.

We opened a public consultation process on the draft Corporate Strategic Plan with key stakeholders and the local community, as it was important that your views were considered and incorporated within the document.

Consultation responses have now been received and included in the plan, and the final version including the amendments is available on our website [www.nantwichtowncouncil.gov.uk](http://www.nantwichtowncouncil.gov.uk) and will be published in due course.

The three-year corporate plan has five key Core Priorities and the overarching vision of 'making Nantwich an even better place'.







The past year has been turbulent, with many businesses closing intermittently. However, Nantwich Market has remained at the heart of the community throughout, with many of the essential traders keeping their stalls open. In this edition of Talk of the Town we are going to focus on a number of these traders:

### Dave and Karen Welch

We sell a wide range of local farm produce including the best eggs, chicken, sausage, bacon and not forgetting of course, delicious Mrs Darlington's preserves.

It has been nearly 12 months of gazebo up, gazebo down, inside then outside, but thankfully we can still offer our local produce.

We would like to say a big thank you to all our regular, new and future customers. Your support over the past months is appreciated and we look forward to welcoming you to our stall again soon.



### Peter Stokes

Since the early seventies we have been trading at Nantwich Market on Thursdays and Saturdays. We take pride in selling our home grown and locally sourced produce of fresh fruit and vegetables, together with selected produce from Wholesale Markets.

We are very proud to have served the people of Nantwich and beyond during our many years here.



### Stuart's Fresh Fish

At Stuart's fresh fish my wife Marie and I try to bring to you the freshest and widest variety of fish possible all the way from Fleetwood every Thursday and Saturday.

I come from a fishing family myself and first went to sea aged about 9 on the inshore trawler my dad worked on and have been involved in the shore side of the fishing industry since leaving school.

Every morning I get up early and start buying from various different suppliers on the fish market who buy fish from fishing ports all over.

We specialise in inshore day boat fish that has only been out of the water for a short time. I also have access to the auction market where I can buy the fish laid out and sorted on the market that has only been landed hours earlier.

Our haddock and salmon is picked by us, and smoked for us at the Oban fish selling company's smoking kiln using oak and beech chips to give a distinct smoky aroma.

We are currently operating out of our mobile refrigerated display van outside the main entrance to the market and welcome you to come along and try our superb variety of fresh fish and seafood.



**For all traders' latest offers, products and news follow Nantwich Market on Facebook**

## Nantwich Digital Museum News

With the museum once again closed to the public due to the Covid-19 pandemic, the focus continues on Nantwich Digital Museum delivered via the Museum website [www.nantwichmuseum.org.uk](http://www.nantwichmuseum.org.uk) and social media [www.facebook.com/nantwich.museum](https://www.facebook.com/nantwich.museum) and [twitter.com/NantwichMuseum](https://twitter.com/NantwichMuseum).

The annual Nantwich Camera Club exhibition scheduled for the Millennium Gallery early in the year has been deferred, but a selection of images can be found on the website in the online exhibition.

Following the success of online talks, a new series has been devised providing an opportunity to learn more about the history of the area, the evolution of local maps and the story of Sir John Brunner of Brunner Mond, the chemical works in Northwich, who contributed £200 towards the construction of a Free Library, the building destined to become today's museum.

Wednesday 17 February ***"The History of Townsend House and Nantwich Walled Garden"*** by Helen Cooke

Wednesday 24 February ***"The Drovers come to Nantwich"*** by Wyn Jones

Wednesday 3 March ***"The Story of Crewe Hall"*** by Graham Dodd

Wednesday 10 March ***"The River Weaver and its Water: the Good, the Bad and the Ugly"*** by Helen Cooke

Wednesday 17 March ***"Mapping Nantwich from Speed to the Ordnance Survey"*** by Keith Lawrence

Wednesday 24 March ***"Sir John Brunner: his Life, Legacy and Connection with Nantwich"*** by Diana Leitch

Participants can join the talks from 1.50 pm for a prompt start at 2.00 pm. Full instructions for joining will be provided when booking.

The cost is £5.00 per talk with all proceeds supporting the work of the Museum. Tickets can be obtained online at: <https://nantwichmuseum.org.uk/webinars-2021/>



## Do you have old, unwanted laptops lying around?

## You could help children in our community!

The Rotary Club of Nantwich is looking for laptops and tablets that are no longer needed.

One of our local computer shops, The Laptop Shop, has kindly agreed to renovate, upgrade and securely wipe (if necessary) for school use. They will then be donated to local schools for children who have no or limited ability to access home internet learning. If the computer is not suitable then it will be recycled responsibly.

If you have any unwanted laptops or tablets for donation, then please ring the Rotary Club of Nantwich on 07973635794 or email [tony.hoy@btinternet.com](mailto:tony.hoy@btinternet.com) and collection will be arranged. If easier, you can also drop them off at The Laptop Shop, 91 Hospital Street, Nantwich CW5 5RU (but please ring Peter on 01270 620770 first due to Covid restrictions).

Thank you.





# Reaseheath College celebrates 100 years

Throughout this year, the Reaseheath Community will be celebrating the college's 100th anniversary and all that has been achieved since the college (originally named The Cheshire School of Agriculture) first opened in 1921.

As part of the centenary celebrations, a new website has been launched ([www.reaseheath100.com](http://www.reaseheath100.com)) to share the history of Reaseheath, including photos from the archive, amazing alumni stories and much more.

If you have a story or memory to share of your time at Reaseheath, or if you're looking to reconnect with fellow alumnus, you can do so on the website or by emailing [alumni@reaseheath.ac.uk](mailto:alumni@reaseheath.ac.uk).

You'll also find details on events being held throughout the year and information on how to get involved with the celebrations.

Also, make sure you are following Reaseheath College on social media for the latest news and events.



## Community Newsletter

The Connected Communities newsletters are informative electronic newsletters.

They contain updates on our Connected Communities Centres, Neighbourhood Partnerships and Care Communities, plus information on commissioned services, conferences, events and consultations.

So if you are looking for help and assistance, companionship, support groups, new activities, or just the latest community news, this is the place to go.

If you would like to receive a copy of the newsletter, contribute to future editions or even write a column please email [deb.lindop@cheshireeast.gov.uk](mailto:deb.lindop@cheshireeast.gov.uk)

A friendly face



Nantwich Buddies

A helping hand

We can help with...

Shopping

Prescription collection

Befriending phone calls

Call 0300 123 5034

NANTWICH



FARMERS' MARKET



Nantwich Town Square

Last Saturday of every month

9am until 3pm

# Talk OF THE Town

## Nantwich Is Still Blooming

Over the Christmas period two mother and child angels graced either side of the West door of St. Mary's Church in Nantwich, the result of an idea floated by one of Nantwich in Bloom's volunteers.

Nantwich in Bloom volunteers, Gina Haigh and June Twelves embraced the idea and designed and made the contemporary angels using recycled materials and free foraged foliage.

Donated conical garden supports were used for the main frame and the heads and wings sculpted from chicken wire. The wings were attached to the mother figures, gently encircling the smaller child structures. Wicker halos entwined with berries, foliage and twinkling lights were added and the angels were ready to bring light, peace and joy to Nantwich.

These angels have now been replaced by colourful spring planting, but Nantwich in Bloom's main Guardian Angel is still present in the town Square.

Volunteers are already planning future planting in the town ready to bring signs of growth, colour and hope for Spring.

The Community Orchard, in Nantwich close to where the railway bridge crosses over the River Weaver, is managed by Nantwich in Bloom.

Since the orchard was established in 2008, the number of trees has grown considerably – from four to forty-five.

There are different varieties of apples (eaters, cookers and ones that are both), including some old varieties and a few particular to Cheshire. There are also pear, damson, greengage and plum trees.

About ten years ago various organisations, including Reaseheath College, generously donated trees to the orchard. Unfortunately, the paperwork for some of the trees, which noted their variety, was mislaid and could not be found.

Nantwich in Bloom committee decided to ask the experts at the National Fruit Collection to identify the unknown varieties. Samples of the fruit and cuttings of the foliage were sent for identification. To the delight of the committee, the apple experts successfully identified all the samples sent from the orchard.



One tree, however, remained unidentified because of its immature state, including the lack of fruit suitable for identification. Last year it was decided to seek the help of the experts again. A month or so later the good news arrived – a positive identification.

The tree is a Blenheim Orange, a dual-purpose variety (an eater and a cooker). When mature, the tree will produce fruit with a crumbly texture and an excellent flavour, tasting of nuts.

**You can follow all of our activities on [www.nantwichinbloom.org](http://www.nantwichinbloom.org), also on Facebook, Twitter and Instagram.**

**All volunteers always welcome, contact [pennyrow123@outlook.com](mailto:pennyrow123@outlook.com)**



## Nantwich Concert Band News

It is almost 12 months since Nantwich Concert Band last met to rehearse in their new venue at Highfields Primary and all engagements were cancelled.

However, the band is a social group and members have kept in touch through Zoom quizzes and bingo in addition to having an active socialising group on Facebook where members share funny videos and musical advice/jokes.

Many have enjoyed playing their instruments to keep themselves and friends and family entertained. During the time of less restrictions one member kindly held sessions for any 6 to go and play in his garden.

Everyone is looking forward to rehearsing and performing in our community again. Desperately hoping things will improve in time to hold their annual Midsummer Music Concert this year.

If you are interested in learning an instrument or receiving lessons, please get in touch with our musical director who is currently offering online lessons: [musicaldirector@nantwichband.co.uk](mailto:musicaldirector@nantwichband.co.uk)



[www.nantwichband.co.uk](http://www.nantwichband.co.uk)





# A BUSY PERIOD FOR NANTWICH FOOD FESTIVAL

Although Nantwich Food Festival was cancelled last year, festival volunteers have still been busy organising and supporting various activities within the local community. As for this year's festival, the organisers are working towards it going ahead in some format, although it will be Easter before a clearer picture emerges.

Last Autumn, the festival presented their lockdown awards (perhaps now known as lockdown1) to residents and businesses who in some way contributed to the Nantwich community.

Covid Community Hero Awards were presented to Georgia Speet who instigated a selection of local initiatives during lockdown 1 and Gary Socha and Aris Tsinias for their efforts in raising much needed funds for local charities.

Recipients of the popular Young People's Award were two children who took time out to support charitable causes.



Bella McKinney who took on some crazy challenges to raise funds for the Wingate Centre and 10-year-old Oliver Fogg who ran the equivalent of a marathon over 26 days to support the mid-Cheshire hospital fund.

Local businesses to receive awards were Coral Reef Chip shop for providing food parcels for those in need and NHS workers, and Clems traditional greengrocers for business positivity by continuing to supply and deliver weekly fruit and veg to those customers who could not get out.

Many people have and still do get creative during lockdown and Caroline Rees received an award for her lockdown kitchen creations.

Nantwich Food Festival have also been supporting the local foodbank during the pandemic by organising regular "drop off and go" collections. In a special pre-Christmas event, enough items were collected and distributed to support over 500 individuals during the festive season.



## Nantwich Police Update

As a community team the staff at Nantwich Police station have found this to be a really challenging year for many reasons. Covid has presented us with a whole new area of work that has significantly added to what is already a demanding role.

As a community, Nantwich has been extremely compliant with the restrictions throughout the pandemic and we've been met with very little resistance when encouraging people to do the right thing.

A big part of our role has been to support those who have suffered most from the restrictions, those who live alone, suffer from mental health or are particularly vulnerable.

Many of these encounters have really brought it home to individual officers just how isolated the pandemic has left people and what a difference such selfless neighbours and volunteers have been.

To see the generosity at each of the Nantwich foodbank collections arranged by the food festival organisers was truly heart-warming and showed just what a caring community we have.

In addition to Covid and other aspects of crime prevention, we have continued to meet many of our local priorities, such as improving road safety through our Trucam speed enforcement. Our dedicated PCSOs target roads where members of the public repeatedly raise

concerns of vehicles travelling above the speed limit.

We really hope for a brighter 2021 and can't wait for all the fantastic events to return, we miss the buzz of our thriving town centre and being able to meet with both locals and the visitors from afar and we would like to wish everyone a belated happy new year from all at Nantwich Police.





Get social with us



Get In Touch with us:

Tel: 01270 628 633

[www.nantwichtowncouncil.gov.uk](http://www.nantwichtowncouncil.gov.uk)

# #SHOPLOCAL

## How to support our independent traders in Nantwich

In Nantwich we are lucky to have a wonderful array of independent traders. Competing against high street chains is always a struggle, and this past year has made life even tougher for our traders. So whether we can visit these shops in person or not, let's get behind them and support them where we can!



Tell your family and friends about them



Follow them on social media



Share their social media posts



Like, tag or comment something nice on about them on social media



Review their products/services online



Visit their website and browse blogs



If you visit their shop in person or online, check in on social media



Buy from them, in person or online, then post a picture on social media