



Talk of the Town

AUTUMN 2023

Refurbished Public Toilets Set To Open

Back in 2021 we consulted with residents about the toilet facilities at Snow Hill. The results concluded that there was a high demand for the re-opening of the toilets.

Work has been underway on the block over the past few months and we are delighted to announce that the newly refurbished toilets will be open very soon!

The upgrade will include a pay-per-use scheme (20p) and will provide two direct access toilets – one unisex and one disabled.

And don't forget the Town Council work in partnership with a number of cafés and pubs in the area to offer clean, safe and accessible toilets.

Under the scheme participating businesses will allow members of the public to use their toilet facilities free of charge during normal opening hours.

Participants include:

Café De Paris
Pillory House Coffee Shop
Nantwich Museum
Kennedy's American Diner
Deadwood Smokehouse
Pepper Street Coffee
Ginger & Pickles
Wickstead Arms
The Malbank
Costa
Olea
Oddfellow Arms



Nantwich Town Council Supports Nantwich Library

At the Council meeting on 14th September, Councillors voted to support Nantwich Library, by agreeing to fund a half day of opening.

Cheshire East Council launched a consultation on libraries, proposing to reduce current opening hours, in a bid towards filling a £20m funding gap in its budget.

Councillors agreed that the library plays a valuable role in the community and voted to pay £22,000p.a. to keep the town's library open for an extra half day.

The amended opening hours are set to take place from 1st November 2023.



A Message From The Mayor

My consort, Tony and I have had a very busy diary since my term started, and I am delighted that I can share some of the enjoyment with you. From celebrating the completion of the Children's Duathlon on the Barony Park, being part of the Police Competitions for children over the holidays, to judging at the Nantwich Food Festival, Nantwich In Bloom and Nantwich Pride which was an epic success, to name a but a few.

As a town we need to celebrate that we have so many committed volunteers, without them none of this would be possible, this goes without saying, action groups are invaluable.

We are looking forward to going into the autumn months and to our Tree of Light ceremony on Sunday 29th October, Remembrance Service on Sunday 12th November, which as a town we always have a large respectful turn out.

Let's not forget the brilliant family event, Nantwich Christmas Light Switch on Friday 17th November.

I wish you all safe and Happy Christmas and a peaceful New Year



Your Councillors



Mayor of Nantwich

Councillor Stephanie Wedgwood (West Ward)
Tel: 07814 686377
stephanie.wedgwood@nantwichtowncouncil.gov.uk



Deputy Mayor of Nantwich

Councillor Stuart Bostock (North Ward)
Tel: 01270 627702
stuart.bostock@nantwichtowncouncil.gov.uk

North Ward



Councillor Daniel Bull
daniel.bull@nantwichtowncouncil.gov.uk



Councillor Anna Burton
(Cheshire East Councillor)
anna.burton@cheshireeast.gov.uk



Councillor Adrian Heald
adrian.heald@nantwichtowncouncil.gov.uk



Councillor Mary Slinn
mary.slinn@nantwichtowncouncil.gov.uk

West Ward



Councillor Loic Charbonneau
loic.charbonneau@nantwichtowncouncil.gov.uk



Councillor Caroline Kirkham
Tel: 01270 627999
caroline.kirkham@nantwichtowncouncil.gov.uk



Councillor Pam Kirkham
Tel: 01270 627999
pam.kirkham@nantwichtowncouncil.gov.uk



Councillor Arthur Moran
(Cheshire East Councillor)
Tel: 01270 624071
arthur.moran@cheshireeast.gov.uk

South Ward



Councillor Riddell Graham
riddell.graham@nantwichtowncouncil.gov.uk



Councillor Peter Groves
Tel: 01829 720439
peter.groves@nantwichtowncouncil.gov.uk



Councillor Kim Jamson
kim.jamson@nantwichtowncouncil.gov.uk



Councillor John Priest
(Cheshire East Councillor)
john.priest@cheshireeast.gov.uk



Councillor Geoff Smith
(Cheshire East Councillor)
geoff.smith@cheshireeast.gov.uk

Town Clerk

Mrs Samantha Roberts
Civic Hall, Market Street, Nantwich, CW5 5DG
Tel: 01270 619224
samantha.roberts@nantwichtowncouncil.gov.uk



Your Views Matter....

Nantwich Strategic Plan

Back in 2020, Nantwich Town Council adopted its first Strategic Plan, including five Corporate Priorities and associated key objectives that the Council sought to achieve between 2020-2023.

The Town Council have been developing a new four-year plan and will be opening a public consultation process to stakeholders and the local community, to comment on the objectives included in this plan.

It is important that your views are considered and incorporated within the document.

The strategic plan has five key Core Priorities and a vision of making Nantwich an even better place.

To view the objectives contained in the plan and have your say either call into Nantwich Civic Hall, Market, or visit Nantwich Town Council's website.



2024/2025 Budget

Nantwich Town Council owns and manages a wide range of facilities and services including the Civic Hall, Market Hall, allotments and public toilets.

Nantwich Town Council is in the process of preparing a draft 2024/25 budget. This includes the 'precept', the amount charged to residents to pay for Town Council services.

We are keen to hear your views on the draft budget which will be considered before the budget is approved in December.



The draft budget and strategic plan will be available to view on our website and in person at Nantwich Civic Hall from week commencing 13th November 2023.

Scan this QR code to visit our consultation page.

Community Garden Volunteers Needed

The Growing Health Community Garden is looking for a group of Core Volunteers to help deliver its programme of activities.

Are you passionate about helping people and making a difference to their lives?

Do you have an appreciation for the power gardening has on health and wellbeing and want to share it with others? Do you want to make a positive contribution to your community? If so, we would love to hear from you.

To discuss further contact Project Co Ordinator Adele Frost at adele.frost@nantwichtowncouncil.gov.uk or call 07521 757 282.

For full information and application form visit www.nantwichtowncouncil.gov.uk/growing-health-community-garden-volunteer/



New App For Nantwich

-  COUNCIL INFORMATION
-  BUSINESSES
-  CIVIC HALL
-  COMMUNITY
-  NEWS & EVENTS
-  SPECIAL OFFERS



The new Nantwich Town Council app is coming soon!

This app promotes Nantwich, its shops and businesses, Civic Hall, Market, events and much more.

The mobile platform provides an easy to use interface, which will allow users to quickly find the information they require.

Push notifications will allow for special offers and event reminders.

Follow us on social media or visit our website for the launch date

Nantwich Luncheon Club

Nantwich Civic Hall

Open to everyone
over 60



 Tuesdays
12 noon

 Great food &
Great company

 Just £6
(£7 non-Nantwich resident)
2-course meal



Book before 12 noon on Friday
Telephone: 01270 628633
Direct at: Nantwich Civic Hall



In Other News...

You can now subscribe to the Cheshire East Council Garden Waste Recycling Scheme.

From January 2024, you'll need a subscription to the scheme if you would like your garden bin to continue being collected.

The quickest and easiest way to sign up is by visiting: cheshireeast.gov.uk/garden-bin and clicking the subscribe button.



Cheshire East Council are seeking your views on proposed changes to the borough's parking arrangements, which aim to improve fairness and consistency across our towns.

The consultation runs until 1 November 2023. You can view the parking proposals being consulting on – and find the details of how you can respond - at: https://www.cheshireeast.gov.uk/parking_consultation

We are delighted to announce the opening of a fantastic new multi-wheeled facility at Barony Park.

We are very grateful to the FCC Communities Foundation for grant funding this project and we hope it will get lots of use from our local communities in Nantwich!



Cheshire East Deputy Leader Visits Nantwich

The Deputy leader of Cheshire East and Chair of the Highways and Transport Committee, Craig Browne visited Nantwich on Thursday 14th September 2023 for a tour, mainly focusing on highways issues in the town, led by Councillors Anna Burton and Arthur Moran of Nantwich North and West Ward.

Before getting onto highway issues, they met at the Civic Hall, visited the library and the market hall. Originally hailing from a market town, Craig was very supportive of our indoor market.

The tour took them to Pepper Street, looking to address the pressing issue of keeping the town pedestrianised during commercial hours while providing access for residents. Improved signage and coded access were explored. Craig was very insightful and offered some guidance.

Discussions took place regarding Millstone Lane parking and traffic calming. Similar problems were highlighted for Welsh Row, Queens Drive, Barony Road, Middlewich Road and more recently the Waterlode. The trio considered drop curbs in some areas, refuge Islands and introducing a 20mph zone in others.

The walk then moved to Snowhill carpark, past the new toilets, and a conversation about Section 106 monies, and the need for a pathway through Snowhill connecting the new estate to the town centre, more cycle parks and a range of ideas for a smartening up of the Snowhill area. This is important for residents old and new, but also to welcome tourists.

The last stop was at Waterlode where it was felt that there appeared to be a lack of civic pride.



The whole area requires voluntary groups, the town ranger, and Cheshire East Council to come together. There are plans in place to re-do the paving and build frames around the trees, but we must also tidy up the foliage and paint the fences.

Finally, issue of buses in Nantwich and in particular a direct link to Leighton hospital was raised. Craig suggested that Flexi Link may provide an option and to encourage residents to take part in the consultation, visit Nantwich Town Council's website's consultation page. The Town Council has agreed to set up a working party to help address this issue.

Councillor Burton thanked Craig Browne for his valuable time, and assisting in developing a plan to improve the town's highways and transport, some scope for what is achievable and how to go about implementing change.

Nantwich Food Festival A Huge Success!

The sun shone, the crowds arrived and Nantwich was again a foodie hub, welcoming friends and families from near and far to enjoy the annual Nantwich Food Festival.

The Bowling Green and Love Lane marquees plus town centre market-style zone sold a diverse range of produce from vegan cakes to organic vegetables, handicrafts to halloumi. More local businesses than usual exhibited and many exhibitors ran out of goods due to capacity crowds.

So what took place?

Four celebrity chefs including Simon Rimmer and Jack Stein delighted audiences; they and the many talented, local chefs demonstrated their prowess in the Food Theatre, often with standing room only for their demonstrations. Some demos were accompanied by sign language in a new initiative to improve inclusivity.

The new and popular Cookalong sessions supported entrants to produce meals under the instruction of trained chefs, whilst the Kids Marquee was a real success with volunteers constantly busy helping children with fun and crafty activities.

Other Festival entertainment was a treat for all; more brass bands than usual by popular request, stilt walkers, fire eaters, dancers and more. Two live music stages started performances on Friday and continued throughout the Festival, creating a great atmosphere.



Meanwhile Nantwich Town Mayor, Councillor Steph Wedgwood, awarded rosettes to her chosen exhibitors and local businesses that had decorated their windows.

Overall a huge success; Festival Chairwoman Chris Farrall said "We pay tribute to our headline sponsor, Nantwich Town Council and all the generous sponsors including Cheshire East Council. Their continued support enables the Festival to take place for the benefit of Nantwich, and encourages visitors to return, maintaining the vibrancy of the town."

"We sincerely thank the local residents and businesses for their support and patience with the demands of holding this event in the town itself. We do this every year to ensure that visitors experience the town, not just the Festival."

The Festival relies on the work and enthusiasm of its volunteers; to get involved and ensure another successful Festival in 2024, just contact volunteers@nantwichfoodfestival.co.uk

Bloomin Marvellous

It has been a busy few months for our team of volunteers, and we thought the town was looking at its blooming best when North West in Bloom judges visited back in August. The town centre was full of colour and in the sunshine the judges toured the town and met volunteers and allow those who work hard to make Nantwich attractive.

Prior to judging all the independent floral displays of the town's local businesses, shops and pubs were judged by the Mayor, Steph Wedgwood, accompanied by Deputy Mayor Stuart Bostock and Nantwich in Bloom members.

Congratulations to all those who produced and maintained these displays. Premises with floral displays have been awarded certificates of excellence, 57 in all, full details can be found on our website www.nantwichinbloom.org

Because Nantwich has so much more in addition to the town centre, the North West in Bloom judges were also invited to see the herb planting and new 'Secret Garden' at Nantwich Museum, beds and planters on Nantwich Railway Station, the Growing Health Community Garden, tree and hedge planting on Brookfield Park and Nantwich Riverside including the Lakeside Community Copse, wildflower planting at Nantwich Lake, and the Community Orchard and renovated willow feature. We certainly had a lot to show the judges and we hope that we have reached 'Gold' standard again this year - the results are due out soon!

In July community homes and community venues' gardens were viewed by invited Nantwich in Bloom judges, and certificates have been awarded to all entrants with the Mayor's Award for Best Overall Floral Display being given to Bowling Green Court. Volunteers also continue their work with local primary schools.

New volunteers are always very welcome to help us with our wide range of gardening and green projects, if interested please contact: pennyrow123@outlook.com



Nantwich Museum

Nantwich Museum has an exciting programme for the months ahead!

In Cememto Veritas exhibition - (4 October - 2 December)

An exhibition of concrete sculptures by Italian Mario Loprete in the Millennium Gallery. This exhibition features figures presented in concrete and a variety of familiar Italian vehicles. The artwork will be available to purchase.

Running alongside In Cemento Veritas will be Vile Bodies: Satirical Ceramics in the 21st Century, by local artist Geoff Elliott featuring familiar characters from the political and sociological scenario.

The Street is my Studio - (4 October - 11 November)

Showing in the Community Gallery this celebrates the centenary of local artist J. Haydn Jones. Nantwich provided a wealth of subjects for Haydn's art.

Walking Tours - The museum has a selection of varied guided walks which all start at 11.00am.

Costs for all walks are just £6 each (£5 for Museum Members). Please check the website for more details.

Friday Coffee Mornings - Final Friday of each month at the Museum - 10.30am - 12.00pm. Cake donations welcome.

Museum's Friendship Group - Open to anyone affected by dementia. Meet twice a month on Mondays (1st and 3rd Mondays) between 2pm and 4pm with refreshments provided.

Did you know?

Nantwich Museum has about 100 local history booklets for sale in the Museum shop and also online. They make ideal presents for anyone interested in Nantwich's past.

For further information contact:

Nantwich Museum on enquiries@nantwichmuseum.org.uk

Telephone 01270 627104; Website: www.nantwichmuseum.org.uk

<https://www.facebook.com/nantwichmuseum>

<https://twitter.com/NantwichMuseum>





Nantwich Concert Band News

Nantwich Concert Band have been celebrating their 40th anniversary. As part of the celebrations played on the bandstand in Llandudno and a theatre trip to see Six The Musical which the band have been playing music from this season.

The Band was thrilled to be playing at the Food Festival again. It's great to see so many people at the event and listening to live music.

We would like more people to join our friendly and relaxed band with an emphasis on rehearsing for public performances. Playing music from classical to film scores and modern tunes. We always welcome new players on any instrument but have particular vacancies for alto sax, Trombone and tuba. The concert band rehearse on Wednesdays from 7.30pm to 9.15pm at Highfields Academy.

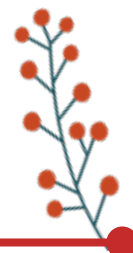
There is a new rehearsal time for our Junior Band. The junior band rehearse on a Sunday morning now from 9.30am at Highfields Academy. This band is for children from age 5 and up who are having lessons, we also have instruments available for loan whilst playing in the Junior Band. We can next be heard at a charity

Remembrance Concert, Acton Proms, Acton Church on Sunday 12th November at 6.30pm. Funds to go to The Royal British Legion. Tickets £10 available from Steve Davies phone 01270 624135 or 07731800663.

Our Christmas Concert will be held at the Civic Hall on Sunday 10th December at 2.30pm

For more information about either band contact Musical Director Nick Birch: musicaldirector@nantwichband.co.uk

To find out more about the Band's latest news visit the website: www.nantwichband.co.uk



New Members Wanted

Are you passionate about helping others?

Would you like to meet like-minded others?

The Rotary Club of Nantwich could be the place for you, and what's more they are looking for new members.

Rotary Club members share ideals of service, friendship, diversity, integrity, and leadership, and come together to help others, whether that be locally or across the world.

Nantwich Rotary meet on Tuesday at the Bowling Green pub, at 12.45pm, membership cost is currently £50 and

they are looking for individuals who want to help with fundraising, enjoy socialising and who want good friendship within Rotary.

Some examples of past projects include Santa float, community events, Food Bank donations, laptop initiative for schools and collecting for World disasters.

And if you are unable to become a member, but still interested, why not become a friend and give a few hours of your time.

For more information please call 07758 824256



A 'Rory-ing' Success For Nantwich Civic Hall

Nantwich Civic Hall welcomed the Rory Gallagher Festival UK through its doors for the first time over the August Bank Holiday weekend.

Now in it's 12th year, the Festival started in Nantwich back in 2011 as a bet, when organizers Nigel Humpreys and Steve Cresswell were challenged by the Star Inn landlord to organize a band for an outdoor music event.

Who knew that this event, then featuring 4 bands all playing Rory Gallagher's music, would turn into an annual event. The event moved to the Railway Hotel for more space in 2013, and during 2022 the organisers worked with Nantwich Town Council on creating an even better festival experience.

The outcome, with the support of the Nantwich Town Council, and Councillor Arthur Moran, was a superb festival, which welcomed hundreds of visitors through the Civic Hall doors to see no less than 10 bands perform over the 3-day event.

Rory Gallagher performed in over 2000 concerts throughout his illustrious musical career, a self-taught virtuoso who became a universally acclaimed internal folk hero.

Now you can enjoy his music live, as plans are underway for next years' Festival, which promised to get better and better, with tickets going on sale over the next month.





St Luke's Hospice Christmas Tree Festival in partnership with St Marys Church

St Luke's Hospice will be running their first Christmas Tree Festival in partnership with St Mary's Church, Nantwich this year between 24-26th November 2023. There are various elements to the festival and there is something for everyone!

Sponsor A Tree

This will be an enchanting display of individually decorated Christmas trees, created by local businesses and individuals.

Would you like to be part of this?

We are looking for businesses, organisations and individuals who would like to sponsor and dress their tree for the festival. We'd love imaginatively decorated trees that perhaps reflect a business's product and something a little bit different! www.slhospice.co.uk/sponsoratree

Christmas Tree Festival

Over the 3 days of the festival come along and view the gorgeous trees. On arrival rent your pair of personal silent headphones, where you can listen to the "Sounds of Christmas" as you peruse the display of trees. Choose between Christmas music or an audio history of the church.

Christmas Cinema

On Saturday 25th November there will be 2 Christmas Cinemas. A family friendly film, Polar Express at 4.30pm and It's a Wonderful Life at 8.00pm. Tickets must be purchased in advance. Drinks and the obligatory popcorn will be available to buy.

To sponsor a tree or buy tickets for the cinema visit: www.slhospice.co.uk/treefestival

St Mary's Church

We are open to visitors Monday to Saturday, 9.30am – 4pm, and for services on Sundays (8am, 9.30am, 10.45am, 6pm). All are welcome to attend services or to look around, sit quietly, or pray and light a candle.

We welcome all enquiries about baptisms and weddings (don't worry if you feel you don't have a 'qualifying connection' for marriage - there's usually a way). And we will always say yes to a request for a funeral in church.

Among the many activities on offer are our Friday 'Place of Welcome' in the Parish Hall, 10am-1pm each week, a free, safe, welcoming space for anyone to drop in to share food, find a listening ear, and meet together in friendly company.

We also have many groups for children of all ages, including training for young singers on Tuesday afternoons.

To find out more and to keep in touch with St Mary's, visit our website stmarysnantwich.org.uk or call in church. We produce a weekly news sheet and a monthly magazine, both available in print and online.

Special services and events coming up:

Sunday 29th October, 5.30pm Tree of Light Ceremony; 6pm All Souls' Service
 Tuesday 31st October, Halloween Party, Parish Hall & Church
 Saturday 11th November, Christmas Pudding Stir-Up, Parish Hall
 Sunday 12th November 10.55am Remembrance Service, The Square
 Friday 17th November, St Mary's Christmas Lights Switch-On
 Friday 24th – Sunday 26th November, Christmas Tree Festival & Cinema (with St Luke's Hospice)
 Sunday 3rd December 4pm Christingle Service; 6pm Advent Carol Service
 Saturday 16th December 2pm Messy Christmas, Parish Hall
 Sunday 17th December 9.30am All Age Nativity with the Donkeys; 6pm Carol Service
 Christmas Eve 2pm, 3.30pm, 5pm Crib Services, 11.30pm Midnight Mass
 Christmas Day 10am All Age Communion



Enquiries to the Parish Office: 01270 625268, office@stmarysnantwich.org.uk



Cheshire Police Band

Supported by Dublin Concert Band, the Cheshire Police Band will be returning to Nantwich Civic Hall in a wonderful concert on behalf of the Poppy Appeal in Nantwich.

The event will take place on the Sunday 26th November, 2pm with all proceeds going to the appeal.



Tickets are just £10 and available from Nantwich Civic Hall. Telephone: 01270 628663.

NANTWICH CHRISTMAS LIGHTS SWITCH ON

Friday 17th November

From 3pm,
Switch-On 7pm



Nantwich Rotary and Crewe & Nantwich Round Table are returning with their annual Father Christmas rounds.

Nantwich Rotary's schedule is listed below, and keep an eye on our website for the Round Table's schedule which will be coming soon including Saturday 9th December on the Town Square.

Don't miss him near you during December:

Monday 4th	Kingsbourne
Tuesday 5th	Kingsley Village
Wednesday 6th	Queens Drive
(starting at Cope Avenue to include Malbank Waters Estate)	
Thursday 7th	Manor Road
Monday 1th	Stapeley
Tuesday 12th	Shrewbridge Road
Wednesday 13th	Cronkinson East
Thursday 14th	Cronkinson West
Monday 18th	Queens Drive (remainder)
Tuesday 19th	Wellington Road



Nantwich Late Night Shopping

Thursday 30th November



On Sunday 29th October at 5.30pm residents are invited to gather outside St Mary's Parish Rooms where a Tree of Light will be illuminated with a short service of prayer, hymns and poetry.

Rev. Dr Mark Hart will lead the service with an address from The Mayor of Nantwich Councillor Stephanie Wedgwood, and the choir of St Mary's will be joining the proceedings.

Christmas is a time for families and friends, for celebrating and for giving; it also offers a chance to remember the loss of loved ones and to think about those less fortunate than ourselves.

On the lead up to the event, people are invited to make a donation of £5 to dedicate a bauble to a loved one or a special cause. In addition, names can be listed on Nantwich Town Council webpage of remembrance.

Donations can be made at Nantwich Civic Hall where you will be given the opportunity to fill a bauble with a name, message or items of your choice, which will then be hung on the tree of light until after the 12th night of Christmas, when the lights will be turned off and baubles removed.

The full cost of the tree is covered by Nantwich Town Council and all donations will be divided between the Mayor's charities Nantwich Food Bank, Mid Cheshire Hospitals Charity, Cheshire Dogs Home and St Mary's Church.

TRADITIONAL MARKET

Opening Hours
Tuesday 9am - 1pm
Thursday 9am - 3pm
Saturday 9am - 4pm

Stallholders sell a wide variety of goods including clothing, fresh produce, gifts, treats and household items.

There's always a warm welcome and refreshments available from the cosy cafe.

Meet The Traders...

Nantwich Artist

You'll find Sue, along the central strip of the Indoor Market Hall, just through the main doors nearest St Mary's Church.

Growing up in the town, Sue enjoys celebrating our lovely town and it's buildings through her work. At her stall you'll find a huge selection of Nantwich themed giftware, cards, original artwork and framed prints. Think tote bags, wooden serving boards, slate coasters, glass storage jars etc, depicting our most famous buildings (and of course a selection of our pubs too!)

Specialising in drawing and painting architecture, she will happily take on commission work to draw houses and special venues.

So if you'd like an unusual, meaningful gift do go and have a browse, you'll find her open Tuesday, Thursday and Saturdays.

Sue's three reasons to visit Nantwich Market:

The surprises! As well as all the traditional fare we have everything from fresh flowers, fossils and crystals to ribbons, antiques and sweets!

To give your four legged friend a drink. There's always a water bowl by the main entrance and well behaved dogs are welcome in the Market.

Show your support. So many towns have lost their traditional markets, we're so fortunate to have a particularly amazing one.



Mad Madam Mim

Lena, based on the outdoor market on Saturdays, is a familiar face having traded there since 2017.

Attracting visitors from afar, her stall sells a eclectic mix of gothic ornaments, incense, homemade pickled onions, red cabbage, jams, marmalades, and chutneys.

Lena encourages visitors to call into the market as it provides value for money, good selection of goods and a friendly atmosphere.



Melissa's Menswear

Trading on Tuesdays, Thursdays and Fridays, Melissa has been established at Nantwich Market for over 10 years.

On her stall, which is located in the middle of the indoor market, you will find menswear and accessories including socks, thermals and underwear, offering excellent value for money all year round.

Melissa believes three reasons you should visit the market are:

- Traditional Market, and there isn't many left!
- A warm welcome from traders
- A good variety of products for all ages.



NANTWICH CIVIC HALL

WHAT'S ON

OCTOBER

Saturday 21st Ceroc Freestyle Dance
Friday 27th Oasish
Sat 28th - Sun 29th Mind, Body & Spirit Fair

NOVEMBER

Friday 3rd Very Best In Stand Up Comedy
Friday 10th Women In Rock
Monday 13th Nantwich Film Club
Saturday 11th Ceroc Freestyle Dance
Friday 17th Meet The Beatles
Saturday 18th Pinked Floyd
Saturday 25th Flash - Queen Tribute
Sunday 26th RBL - Cheshire Police Band

DECEMBER

Friday 1st Very Best In Stand Up Comedy
Saturday 2nd Ultimate Stone Roses
Sun 3rd - Wed 5th Santa's Sparkly Surprise
Monday 4th Charity Bingo
Friday 8th UK Bjorn
Saturday 9th Ceroc Freestyle Dance
Sunday 10th Nantwich Concert Band
Monday 11th Nantwich Film Club
Friday 15th 80s Christmas Party
Saturday 16th Paul Larcombe - Elvis Show
Sunday 18th Co-Operative Wind Band
Saturday 23rd - Saturday 30th CLOSED
Sunday 31st New Year's Eve Comedy



First Friday of the Month

WEEKLY ACTIVITIES

TUESDAY

Luncheon Club 12 noon
Table Tennis 2pm - 4pm
Ceroc (Jive & Salsa Dance) 7.15pm - 11pm

WEDNESDAY

50+ Club 9.30am - noon
Tea Dance 2pm - 4.30pm
AC Fusion Dance Beginners 6pm - 7pm
(Modern Line Dancing) Improvers 7pm - 8pm
Main Class 8pm - 10.30pm

THURSDAY

Table Top Sales 8am - noon
Table Tennis 2pm - 4.30pm
Social Ballroom, Latin & Popular Sequence Dancing 7.30pm - 10.30pm

Why not sign up to be on our mailing list and be the first to receive all the latest news on gigs at Nantwich Civic Hall.

Simply drop an email, with 'mailing list subscribe' in the subject to:
nantwich.civic.hall@nantwichtowncouncil.gov.uk

Coming in 2024 for (bookings open soon):

- * Limehouse Lizzy
- * Dire Straits UK
- * Gold to Rio
- * Rock of Ages Experience

Telephone and in-person bookings, Monday - Friday, 9am until 4.30pm.

Bookings also online.

www.nantwichtowncouncil.gov.uk

NANTWICH CIVIC HALL

Live MUSIC



Fri 27th Oct
Tickets £15



Fri 10th Nov
Tickets £15



Fri 17th Nov
Tickets £15



Sat 18th Nov
Tickets £15



Sat 25th Nov
Tickets £20



Sat 2nd Dec
Tickets £15

01270 628633 / www.nantwichtowncouncil.gov.uk

IMAGINE THEATRE IN ASSOCIATION WITH THE **BELGRADE THEATRE** PRESENTS



Santa's SPARKLY SURPRISE

WRITTEN BY IAIN LAUHLAN



A delightful children's show, with lots of audience participation and all children get to meet Father Christmas and receive a gift!

Sunday 3rd December 11.30am, 1.30pm & 3.30pm
Monday 4th - Wednesday 6th December 10am & 1pm

**Tickets: £6 adults, £11 children (inc present), family tickets from £30,
schools/nurseries £10.50 - free teacher spaces available**