

Talk OF THE Town



www.nantwichtowncouncil.gov.uk

Welcome...

It's a great privilege and honour to be elected Mayor of Nantwich for the second time. On the first occasion in 2011 it was not a happy year with the passing of my late Wife and Consort, Margaret from Ovarian Cancer. This will be the fourth time I have taken the Chair following a hard fought election.

My aim as Mayor will be to guide the new Council through the year and ensure that we work as a team in best interest of the Town. First priority is a new Town Clerk.

As many of you know Ian Hope, our Town Clerk, will be retiring in July. He has been a first class Clerk and I thank him on your behalf for his dedicated service to the Council and Town, he will be a hard act to follow.

Councillor Carole Thomas has agreed to be my Consort and we look forward to meeting many of you at various functions during the year.

We hope to raise funds for three charities including Leighton Hospital Prostate Support Group, St Luke's Hospice and The Royal British Legion.

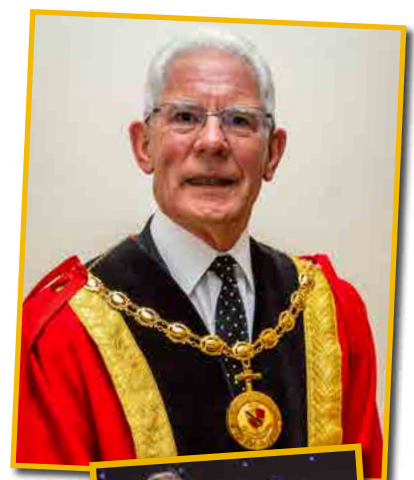
Dates for your diaries, two fund raising events at the Civic Hall:

Friday 20th September two popular local groups California Blue and Tumbling Dice

Friday 25th of October Sounds of the Sixties with the return of the Revolvers

Tickets are available from Nantwich Civic Hall. So please come along, have a great time and support the Charities.

Cllr Arthur Moran



Town News

**Events, Markets
& Festivals**

**Organisation &
Society Updates**

And more...

Talk OF THE Town

Councillors



Mayor
Councillor Arthur Moran
16 Gerard Drive, Nantwich.
CW5 5JR
Tel: 01270 624071
North & West Ward



Deputy Mayor
Councillor Pam Kirkham
35 Marsh Lane, Nantwich,
CW5 5HP
Tel: 01270 627999
North & West Ward



Councillor Stuart Bostock
12 Bowyer Avenue, Nantwich,
CW5 5PS
Tel: 01270 627702
North & West Ward



Councillor Penny Butterill
21 Birch Lane, Nantwich,
CW5 6JU
Tel: 01270 625575
North & West Ward



Councillor David Greaves
C/O Nantwich Civic Hall, Market Street,
Nantwich, CW5 5DG
Tel: 01270 618387
South Ward



Councillor Peter Groves
Yew Tree Close, Bulkeley,
SY14 8DA
Tel: 01829 720439
South Ward



Councillor David Marren
C/O Nantwich Civic Hall, Market Street,
Nantwich, CW5 5DG
Tel: 01270 569284
South Ward



Councillor Andrew Martin
London Road, Stapeley,
Nantwich, CW5 7JL
Tel: 01270 627740
South Ward



Councillor Philip Staley
168 Audlem Road
Nantwich, CW5 7EB
Tel: 01270 482642
South Ward



Councillor John Statham
38 Mallard Avenue, Edleston
Nantwich, CW5 5WE
Tel: 07849 319522
North & West Ward



Councillor Carole Thomas
34 Whitewell Close, Nantwich
CW5 6LY
Tel: 01270 361228
North & West Ward



Councillor Stephanie Wedgwood
19 Mallard Avenue, Edleston
Nantwich, CW5 5XF
Tel: 07814 686377
North & West Ward



Mr Ian Hope
Town Clerk
Civic Hall
Market Street
Nantwich
CW5 5DG
Tel: 01270 619224

INTRODUCING THE NEW MAYOR OF NANTWICH

On Friday 10th May former Mayor, Councillor David Marren opened the Mayor Making Ceremony.

After welcoming guests to the ceremony Councillor Marren presented certificates for appreciation of service to former Councillors John Lewis, Diana Hall, Gordon Bartram and Douglas Bowyer-Bates, who between them have served over 25 years in the community.

Moving back to his Councillor's seat, after being presented with a 'Past Mayor' brooch, Councillor Marren said "I am deeply honoured to have had the opportunity to be Mayor and I've had my eyes opened. I have met so many positive, good hearted people who make this town what it is today, and I will be sad to finish this role. I would like to thank all those who have supported me throughout the year including my wife and consort Belinda, my family and colleagues."

Councillor Andrew Martin proposed the election of the new Mayor. In his speech he commented that as an exceptional Councillor and one of the longest serving members of the Town Council, coupled with his support of numerous local organisations, Councillor Arthur Moran would be an excellent representative for the Council and was delighted to nominate him.

Councillor Arthur Moran, a Nantwich resident, has spent no less than 33 years in public life and has also raised more than £30,000 for charities over the years with his late wife Margaret.

The retired magistrate has a long history of service to the public, having been a Cheshire County Councillor for 12 years, where he was made an honorary alderman. A Crewe and Nantwich Borough Councillor for 13 years, he has been a member of Cheshire East Council since it was formed in 2009.

His charities for his year of office will be the Leighton Hospital Prostate Cancer Support Group, St. Luke's Hospice and Royal British Legion.

Close friend, Councillor Carole Thomas, will be the Mayor's Consort and Councillor Moran has appointed Rev. Dr Mark Hart as the Mayor's Chaplain. Councillor Pam Kirkham has been elected as Deputy Mayor.



NEW COUNCILLORS

We would like to take this opportunity to thank retiring Councillors John Lewis and Diana Hall, and former Councillors Douglas Bowyer-Bates, Gordon Bartram.

We are delighted to welcome to our Council newly elected Councillors David Greaves for the South Ward and John Statham, Carole Thomas and Stephanie Wedgwood for the North & West Ward.



NANTWICH HISTORICAL SOCIETY TURNS 50

This year the town celebrates the 50th anniversary of Nantwich Historical Society.

The society was founded by Herbert Rowsell in 1969 and he has been Chairman throughout these 50 years. He noted at the time that there was no museum, no historical society and very little written history of the town. Over 70 people attended a meeting and a historical society was formed with the following aims:

- Produce a written history of the town
 - Monitor architectural changes, as so much was being lost in the town at the time
 - Minute the oral history of older inhabitants
- Many of the society members have also served for extended periods, including Mr Brian Cowin, who was Secretary for 17 years and Mrs Ruth Harding, who was Secretary for 29 years.

Since the first meeting in 1969 the influence of the Society in the town has grown. The town is extremely grateful for the Society's work with the Sealed Knot in establishing Holly Holy Day into the annual re-enactment of the Battle of Nantwich, an event which brings many visitors to the town in January.

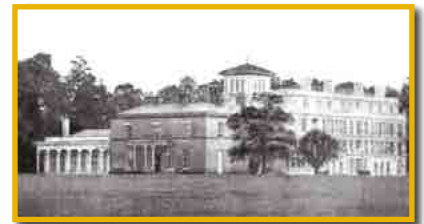
Of equal importance was the involvement of the Society in the founding of Nantwich Museum and its continued support for the work of the Museum today.

Today the Society continues to study history with a particular focus on the immediate locality. This is achieved through a season of talks supplemented with occasional visits to local sites of historical interest and social events. Membership is of the order to 50 with visitors welcome to meetings on payment of a nominal fee.

The 2019/20 season begins in October with a talk about Joseph Priestley who lived in the town for a time and went on to discover oxygen.

In November we shall hear about the life of Cynthia Zur Nedden who lived at Stapeley Grange, which she donated to the RSPCA enabling the founding of the animal hospital we know today.

In the New Year talks are scheduled on the railway at Nantwich, non-conformity in the town and the local pubs.



SOCIETIES SPECTACULAR

Are you looking for a new hobby, interest, or club to join?

Then Societies Spectacular is a must! Taking place on Saturday 20th July, the town is expected to be packed with people showing an interest in what activities the clubs, societies, and groups in the town have to offer!

Organised by the Town Council the event welcomes around 30 organisations in the square between 10am and 2pm, with activities and demonstrations as diverse as photography, amateur dramatics, arts and crafts, fitness and cinema.



This year's Nantwich Jazz Festival policing operation was a great success. The festival saw the lowest number of recorded police incidents and arrests. This was despite record temperatures over the Easter weekend, which led to record numbers of visitors to the event.

The Nantwich police team worked closely with colleagues from Cheshire fire and rescue to make sure that all venues were operating safely for the event. Sergeant Bennett would like to thank everyone involved for making the event a safe environment for all which is credit to all local licensees and stakeholders involved in the jazz festival.

Road safety continues to be a major town policing priority. The Nantwich policing team continue to deploy the TRU-CAM speed enforcement camera around various locations around the town and surrounding area. It is not just about catching people speeding, but is also great to see, that when we carry out enforcement nobody is identified as breaking the speed limit. This shows that drivers are driving in a safe manner and the message is getting out to road users.



Talk OF THE Town

BLOOMIN' MARVELLOUS

For the 8th consecutive year, Nantwich in Bloom were again awarded the Gold medal in the Northwest in Bloom 2018 competition. This was a much deserved award for our volunteer team who had put in many hours of work, planting and tending the plants and especially the many hours spent watering the plants during our long hot summer. Many thanks go also to ANSA for their valiant efforts in helping with the watering. This year the council have agreed to provide a bowser and driver to help the working parties which is much appreciated.

The New Year started with an invitation from the Mayor of Nantwich for representatives of Nantwich in Bloom to attend the Salt of the Earth awards at the Civic Hall. Mark Betteley, our Treasurer, was called upon to say a few words before the Salt of the Earth presentation to Doug Butterill for services to North West in Bloom over 40 years. There were many other worthy award winners from the Nantwich community who had just gone that extra mile for their dedicated cause.

The latest RHS magazine outlined the focus for the North West in Bloom 2019 competition where emphasis will be placed on environmental issues and community involvement. Bee and butterflies will be the summer theme and bee and butterfly friendly plants are being sourced and we plan to involve the community in bringing the environmental issues to the forefront.

Coppicing at Coed Wen went ahead on a beautiful sunny day in February, members of the Round Table and in Bloom took part under the direction of Doug Butterill and the site was noticeably improved.

As our willing volunteers are often asked about the work they do when they are working around the town, it has been decided to provide our working parties with information boards to display around their working area giving the public information and points of contact, hopefully attracting new workforce.

We urgently need more volunteers - just for an hour or two at irregular intervals to join the team and keep our town displays colourful and interesting. Its a friendly team – come and join us!



COFFEE MORNING

Final Friday of each month 10.30am-12.30pm, Nantwich Museum

Join us on the final Friday of each month (except December) where you can indulge with a piece of cake and a tea or coffee in our wonderful Millennium Gallery. This quirky gallery has a programme of temporary exhibitions throughout the year for our visitors to enjoy.

NANTWICH SHOW

The Nantwich Show and the International Cheese Awards will be held in the beautiful parkland setting of Dorfold Hall on the edge of the historic market town of Nantwich on Wednesday 31st July. As ever, the event makes a great day out and there will be something for everyone.

The Show will encompass the largest cheese show in the world, with some 6,000 entries of every type of cheese with something to suit everyone's tastebuds. Celebrity chefs will include James Martin, who will be doing live cookery demonstrations in the marquee throughout the day.

In addition there will be the usual superb celebration of agriculture in the form of displays of farm animals including cattle, horses, sheep, poultry, dogs and even pigeons.

The Countryside Pursuits Area will be packed all day with various ring displays and demonstrations.

The rapidly expanding vintage cars, tractors, commercials and machinery section offers a nostalgic look at motoring from a bygone age, and with a wonderful display of Heavy Horses in the Main Ring, a contrast to the Jason Smyth Adrenaline Tour stunt displays.

There's even retail therapy on offer with 450 trade stands whether it be clothes, tractors, new cars, shopping and craft marquee and a food hall with everything that is best to taste and purchase. There will catering facilities, bars and children's entertainment.

For more details about the Nantwich Show and International Cheese Awards, please visit www.nantwichshow.co.uk





BEAM HEATH TRUST ANNUAL DIVIDEND

It's that time of year again when the Beam Heath Trust pay out their annual dividend to the town's residents.

You don't have to do anything to receive the money - except be at home when the Beam Heath Trust representative calls. They will try three times. But don't worry if you have missed the calls, claims can be made on an elected day.

Not all townspeople qualify, only those who live in the "Ancient Parish of Nantwich" and you must have been born in Nantwich or have lived in the town for more than seven years.

Claims day will take place on Wednesday 19th June, at St Mary's Parish rooms between 3pm - 4.30pm and 6pm - 7pm.



Ever thought of growing your own fruit, vegetables or flowers?

Why not take an allotment?

Allotments are a great way to grow produce, and in addition get some fresh air and exercise.

Interested? We have a selection of allotments waiting to be occupied by Nantwich Residents.

To register for an allotment or to find out more call 01270 619224 or email: nantwichtc@nantwichtowncouncil.gov.uk

2019

**ST MARYS
NANTWICH**

Summer Lunchtime Concerts 2019

**Thursdays
12.30-1.15pm**

6th June	John Gough and Tom Kimmance (Piano Duet)
13th June	Nantwich Singers
20th June	Students from Chethams
27th June	Lauren Scott (Harp) and Conrad Marshall (Flute)
4th July	John Gough (Piano) and Ben Holland (Violin)
11th July	Philip Rushforth (Organ)
18th July	Keith Muggeridge (Euphonium)
25th July	Nantwich Chamber Ensemble (String Octet)
1st August	John Gough (Piano) Rachel Fillhart (Clarinet) and Laurie Ashworth (Soprano)
8th August	Polaris Duo: Gillian Blair (Saxophone) and Elinor Nicholson (Harp)

Admission Free Retiring Collection



CHESHIRE CIVIL WAR CENTRE OPENS

Former Mayor, David Marren, opened the new Cheshire Civil War Centre gallery at Nantwich Museum, which replaces the existing display.

Speaking at the opening event he said: "Although the Civil War produced a military dictator in the form of Cromwell and ultimately led to the restoration of the Stuart monarchy, it did create the foundation for a new kind of monarchy which was quite different from the "absolute" monarchies which dominated the rest of Europe. Today's exhibition tells how Nantwich played its part, and how its people were affected by

the conflict and the hardships and sufferings they endured, but also explains the strategic importance of the town.

In late 1643 Nantwich was the only town in Cheshire still held by the Parliamentarians. The defeat of Royalist forces at Nantwich thwarted King Charles' plan to create a field army in the northwest based on regiments returning from Ireland and so altered the course of the conflict and therefore in some small way we can claim credit for a constitutional monarchy and the supremacy of Parliament."



Talk OF THE Town

NANTWICH CONCERT BAND

Nantwich Concert Band holds an evening of music and dance as they are joined by Fraser School of Irish Dance in their annual Midsummer Music Concert in the Civic Hall, Sunday 23rd June starting at 7pm. Tickets £7.



The Band will continue its work in the local area, performing in the town, particularly at Nantwich Food Festival and other various events.

The Wind Band (part of the NCB organisation) will be raising funds again for Children In Need when they will be joined by Nantwich Young Voices and Fraser School of Irish Dance, at Audlem Public Hall, Sunday 3rd November 2.30pm.

The Wind Band is for beginners or those wishing to play in a more relaxed atmosphere. Rehearsals are held at Brookfield Hall, Shrewbridge Road, Nantwich CW5 7AD Wednesday evenings 6pm to 7.15pm. There are also some instruments offered free on loan to those wishing to play in the Wind Band.

The main band follows the wind band rehearsals on Wednesday evenings 7.30pm to 9.15pm.

There is a varied repertoire of music from traditional wind band music through to more modern and music from stage and screen. The Band will always welcome new members but have particular vacancies for a baritone sax and percussion players, especially a kit player. The Band has its own drum kit so no worry about transporting yours.

For further information contact:
Musical Director, Nick Birch
Email: musicaldirector@nantwichband.co.uk

To find out more about the Band's latest news visit the website www.nantwichband.co.uk



ENTERTAINMENT ALL DAY & NIGHT

FOOD AVAILABLE

NANTWICH PRIDE

JULY 13TH 2019 at THE RAILWAY HOTEL

☎ 01270 623482
🌐 www.nantwichpride.co.uk

FAMILIES WELCOME

MERCHANDISE STALLS, FACE PAINTING & MORE

NANTWICH SET FOR ANOTHER FABULOUS FOOD FESTIVAL

Firmly established as one of Nantwich's most popular events. The NANTWICH FOOD FESTIVAL will be returning this year on the weekend of 30/31st August and Sunday 1st September.

Regularly attracting around 40,000 visitors, this free to enter festival is almost unique in that it is run as a not for profit venture, by a Nantwich based team of dedicated and community minded volunteers.

There will be over 220 food and drink stalls within the town centre, Love Lane and Bowling Green car parks, and all this will be accompanied by a variety of entertainment including two live music stages.

Last year's festival proved a resounding success and organisers are looking to replicate that this year. Four top chefs, Rosemary Shrager, Matt Tebbutt, Sean Wilson and Nigel Brown will entertain us with their live demonstrations in the Civic Hall.

The Festival kicks off on Friday 30th August at 11am, and the Park and Ride service will again be available from key areas within the town.

High quality family entertainment is a key feature of the festival, with the Kids Marquee, live music, Friday night Extravaganza and street entertainment creating a great atmosphere.

Festival organisers sincerely thank Nantwich Town Council and local businesses and organisations, who through their sponsorship and help, make the food festival a truly community event.

More information about the festival and how you can become involved can be found at www.nantwichfoodfestival.co.uk



CHESHIRE DRAMA FESTIVAL

The first Cheshire Drama Festival took place at Nantwich Players Theatre in March, welcoming six competitive entries from different companies around the county. The festival for one-act plays was a new preliminary round of the prestigious All England Theatre Festival.

Over two days, six plays were performed by Bus Stop Productions from Wallasey, D.T.A.T. from Chester, Neston Players, Broughton Amateur Dramatic Group and two entries from Nantwich Players.

It was wonderful for Nantwich players to host the festival and the atmosphere across the two days was exciting and fun. Mike Kaiser, the adjudicator had a difficult job deciding on the winners. However, in the end it was Nantwich Players who scooped four awards with their Studio Production of 'Edgar and Annabel' by Sam Holcroft. A dystopian fable about a group of freedom fighters attempting to stand up to an Orwellian repressive regime, while being continuously subjected to surveillance.

Best Actress – Bethany Froud – Edgar and Annabel

Best Actor – Harry Johnson - Edgar and Annabel

Best Production - Edgar and Annabel - Nantwich Players

The AETF Trophy – Edgar and Annabel – Nantwich Players

Nantwich Players (Edgar and Annabel) were also nominated for the Adjudicators Award.

Following this success, the Northern Competition took place on the 4th and 5th of May at the Washington Arts Centre. After some very tough competition, Nantwich Players were announced the winners, along with Bethany Froud winning the award for Best Actress for her leading role.

The Nantwich Players Team now move forward to the All England Final in Maidenhead on June 8th to represent the North, as the 'Northern Champions' to compete against 3 other Area Champions in a bid to become the All England Champions.

The North have not brought the title home for a very long time so lets see if Nantwich Players can be the ones to do it! Its going to be an explosive Grand Final.

We wish them lots of luck!




ROUTE 78 BUS SERVICE - USE IT OR LOSE IT!

Mikro Coaches came forward last year to provide a bus replacement for the 78 service between Nantwich and Leighton Hospital/Coppenhall, which had faced the axe.

This 78 service is not subsidised by the council and previous operator D&G Buses had decided there were too few passengers to make the 78 service economically viable. Therefore, the continuation of this route will depend on passengers using the service.

Therefore the Town Council urge customers to keep this route alive and use it where possible.



Nantwich Market

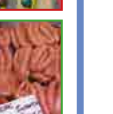
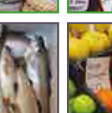
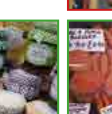
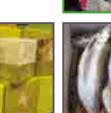
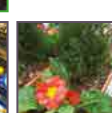
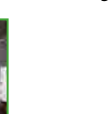
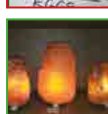
Quality - Value - Choice

OPENING HOURS

Tuesday 9am - 1pm

Thursday 9am - 3pm

Saturday 9am - 4pm



Market Street, Nantwich, CW5 5DG

Talk OF THE Town

KNOW YOUR COUNCILS

CHESHIRE EAST COUNCIL

Cheshire East is a unitary authority and the principal local authority in the area. Its responsibilities (alongside arms-length companies) include:

Education and Schools
Libraries
Transport
Planning Services

Transport (inc. buses)
Leisure and Recreation
Car Parks
Council Tax & Government Benefits

Highways including; Potholes, Tourism Signs, Gritting, Street Lighting, Footpaths

Environmental Services including; Waste collection, Waste disposal, Recycling, Street Cleaning, Food Safety, Pest Control, Dogs



Housing
Social Care
Electoral Services

NANTWICH TOWN COUNCIL

The Town Council is a statutory body and is the most local level of government. It has an important role in promoting the town, representing its interests and supporting the work of different groups in the community. Its responsibilities include:

Allotments
Consultation on planning
Nantwich Information Centre
Publications

Grants to help local organisations
Nantwich Civic Hall
Town Square Events/Management



Nantwich Market
Brookfield Hall
Farmers' Markets

CONTACT YOUR COUNCILS

Nantwich Town Council 01270 619224

Nantwich Civic Hall 01270 628633

Email: nantwichtc@nantwichtowncouncil.gov.uk

Website: www.nantwichtowncouncil.gov.uk

In person: Nantwich Town Council is based at Nantwich Civic Hall, Market Street, Nantwich, CW5 5DG
(Opening hours Monday - Friday, 9am - 4.30pm)



Cheshire East Main Switch Board 0300 123 5500

Social Care and Health 0300 123 5010

For advice or information on what to do if you are concerned about the welfare of a child, information on all Adult and Older People's social care and health services, or to speak to your local Social Care team.

Waste and Recycling 0300 123 5011

Waste, recycling, street cleaning, fly tipping, abandoned vehicles

Council Tax, Business Rates and Housing Benefits 0300 123 5013

Planning and Building Control 0300 123 5014

Environmental Health, Trading Standards and Licensing 0300 123 5015

Electoral Services 0300 123 5016

Housing 0300 123 5017

Leisure, Culture and Tourism 0300 123 5018

Libraries and parks

Births, Deaths and Marriages 0300 123 5019

Roads, Transport and Parking 0300 123 5020

Parking fines, bus passes, bus times, blue badges



Community Safety 0300 123 5021

To contact the Community Safety team with enquiries relating to dog wardens and any CCTV enquiries.

Schools 0300 123 5012

Website: www.cheshireeast.gov.uk

In person: Nantwich Library Cheshire East Council Information Point

(Opening Hours Mon 9am - 5pm, Tue 9am - 7pm, Wed 9am - 1pm, Thu 9am - 7pm, Fri 9am - 5pm, Sat 9am - 1pm)

Please note, the Customer Service enquiry desk closes 15 minutes before the library closing time.

Summer in Nantwich Town Centre



June

Saturday 1st
Nantwich Concert Band

Saturday 8th
Antiques Market

Saturday 15th
Flower Market

Saturday 22nd
Co-Op Wind Band

Saturday 29th
Farmers' Market

July

Saturday 6th July
SchoolsFest & Summer Fete

Saturday 13th
Antiques Market

Saturday 20th
Societies Spectacular

Saturday 27th
Farmers' Market

Wednesday 31st
Nantwich Show - Dorfold Park

August

Saturday 3rd
Artisan Market

Saturday 10th
Antiques Market

Saturday 17th
Summer Market

Saturday 24th
Farmers' Market

Looking Forward

Fri 29th - Sun 1st Sept
Nantwich Food Festival

Mon 14th - Sun 20th Oct
Words & Music Festival

Fri 15th Nov
Christmas Lights Switch-On

WORDS & MUSIC
THE 12TH ANNUAL FESTIVAL

12

TURIA BRAHES

LUCY SPRAGGAN

LEMA SISSAY

LINDISFRANE

THEA GILMORE

TONY WRIGHT
OF TERRORVISION

HAZEL O'CONNOR

SCOTT MATTHEWS

SALEENA GODDEN

GILMORE & ROBERTS

PATRICK BARRHAM

HOLY MOLY & THE CRACKERS

OCTOBER 14TH-20TH
NANTWICH



www.nantwichtowncouncil.gov.uk

Times for events may vary, please visit our website for full details.

June 2019

Sunday 2nd
Friday 7th
Saturday 8th
Sunday 9th
Monday 10th
Saturday 15th
Thursday 20th
Sunday 23rd

Blood Donors
Very Best In Stand Up
Nanocon
Bead Fair
Film Club
Cerc Freestyle Dance
Antiques & Collectors Fair
Nantwich Concert Band

July 2019

Monday 8th
Saturday 13th
Sunday 14th
Thursday 25th

Film Club
Cerc Freestyle Dance
Blood Donors
Antiques & Collectors Fair

August 2019

Saturday 10th
Monday 12th
Monday 26th
30th - 1st Sep

Cerc Freestyle Dance
Film Club
Antiques & Collectors Fair
Nantwich Food Festival

September 2019

Friday 6th
Monday 9th
Saturday 14th
Thursday 19th
Friday 20th

Very Best In Stand Up
Film Club
Cerc Freestyle Dance
Antiques & Collectors Fair
California Blue & Tumblin' Dice

October 2019

Friday 4th
Saturday 12th
Monday 14th
Mon 14th - Sun 20th
Thursday 24th
Friday 18th
Friday 25th
26th & 27th

Very Best In Stand Up
Cerc Freestyle Dance
Film Club
Words & Music Festival
Antiques & Collectors Fair
Dressed to Kill - Kiss Tribute
The Revolvers
Mind, Body & Spirit Event

November 2019

Friday 1st
Sunday 3rd
Saturday 9th
Monday 11th
Saturday 16th

Thursday 21st
Sunday 24th
Saturday 30th

Very Best In Stand Up
Bead Fair
Cerc Freestyle Dance
Film Club
Bon Jovi Forever with
Bryan Adams Exposed
Antiques & Collectors Fair
Dolls House Fair
Electro 80's Xmas Party

December 2019

1st - 4th
Friday 6th
Monday 9th
Saturday 14th
Sunday 15th

Friday 20th
Tuesday 31st

Children's Christmas Show
Very Best In Stand Up
Film Club
Cerc Freestyle Dance
Co-operative Band
Christmas Concert
UK Bjorn - Abba Tribute
New Year's Eve
Very Best In Stand Up

Looking Forward...

January 2020

Friday 17th

Limehouse Lizzy

www.nantwichtowncouncil.gov.uk

01270 628 633

Follow us:

/nantwichcivic



@NantwichCivic



@nantwichcivichall



Weekly Civic Events

Tuesday

Short Mat Bowls 10.00am to noon
Table Tennis 1.30pm to 4.30pm
Cerc 7.45pm to 11.00pm



Wednesday

50+ Club 10am to noon
Sequence Tea Dance 1.15pm to 3.45pm
AC Fusion Dance 7.00pm to 10.30pm
- Modern Line Dancing Club

Thursday

Table Top 8am to noon
(With the exception of Antiques Fair dates)
Social Ballroom, Latin & Popular Sequence Dancing 7.45pm to 10.30pm

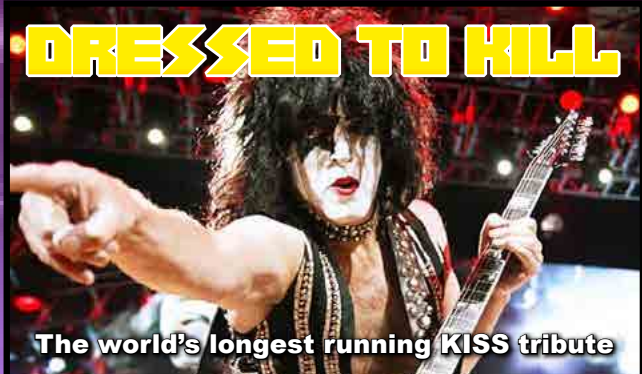


Sunday 11.30am, 1.30pm & 3.30pm, Monday - Wednesday 10am & 1pm
Tickets: Adult £6, Child £11, Schools/Nursery £10.50 (Free teacher places available)
Family Tickets: 2 Adults & 2 Children £30, 1 Adult & 3 Children £35

Live **MUSIC** @ Nantwich Civic Hall



FRIDAY 20 SEPTEMBER 2019
TICKETS: £10



The world's longest running KISS tribute

FRIDAY 18 OCTOBER 2019
TICKETS: £10



FRIDAY 25 OCTOBER 2019
TICKETS: £12



SATURDAY 16 NOVEMBER 2019
TICKETS: £12



SATURDAY 30 NOVEMBER 2019
TICKETS: £12.50



FRIDAY 20 DECEMBER 2019
TICKETS: £10



FRIDAY 17 JANUARY 2020
TICKETS: £14



FIRST FRIDAY OF EVERY MONTH
PLUS NEW YEAR'S EVE SPECIAL



www.nantwichtowncouncil.gov.uk
01270 628633



JUNE 2019

GET IN TOUCH:

TEL: 01270 628 633

www.nantwichtowncouncil.gov.uk

FOLLOW US:



facebook.com/nantwichcivic

facebook.com/nantwichtouristinformation



twitter.com/NantwichCivic

twitter.com/Nantwichtc



Nantwich Civic Hall



Your Venue, Your Choice

- Shows & events
- Conferences & training
- Corporate hire
- Weddings
- Fairs
- Festivals
- Family parties & celebrations
- Fitness activities
- Staff parties / team building

www.nantwichtowncouncil.gov.uk