

# Talk OF THE Town



## Lest We Forget

This year, to commemorate 100 years since the guns fell silent on 11 November 1918 at the end of the First World War, a Service will be held on the morning of 11 November.

The parade will form at Nantwich Civic Hall. Led by the Band and Drums of the Cheshire Constabulary, the parade will step off at about 10.20am to march along Beam Street, Oatmarket and High Street to Nantwich Square.

Members of the public who wish to be present at the service are asked to stand behind barriers which will be erected in the Square.

The Rector of St Mary's Church, the Revd. Dr. Mark Hart, Padre to the Nantwich Branch of the Royal British Legion, will lead the service around the war memorial on the Square. After the church clock strikes eleven o'clock the bugler will sound the Last Post and Chairman John Dwyer will read the exhortation before the two minute silence.

The service will continue with the reading of the names of the fallen by Air Training Cadets and the Nantwich Army Cadets.

Please note: The usual 10.45am morning service at St Mary's Church will not take place and there will not be a service in Church after the service on the Square. The evening service at St Mary's at 6pm, remembering the fallen, will include Faure's Requiem, performed by Nantwich Singers.

Nantwich Town Council is supporting the Nantwich Branch of Royal British Legion with this year's parade and service. In future years the service will continue to be held at 11 o'clock on Remembrance Sunday.

Prior to Remembrance Sunday a "Poppy Cross" will be installed in front of St Mary's Church. For a small donation the Church and British Legion will supply crosses for people to add their own messages in memory of the fallen.

Airman's Grave Service – Sunday 13 January 2019 at 1.00pm.

In future the service at the Airman's Grave will be held on the nearest Sunday to the date of the accident, in 2019 this will be on Sunday 13 January at 1.00pm.



# Talk OF THE Town Councillors



## Mayor

Councillor David Marren  
C/O Nantwich Civic Hall, Market  
Street, Nantwich  
CW5 5DG  
Tel: 01270 569284  
South Ward



## Deputy Mayor

Councillor Arthur Moran  
16 Gerard Drive, Nantwich,  
CW5 5JR  
Tel: 01270 624071  
North & West Ward



Councillor Gordon Bartram  
3 Bishops Wood, Nantwich,  
CW5 7QD  
Tel: 01270 627276  
North & West Ward



Councillor Stuart Bostock  
12 Bowyer Avenue, Nantwich,  
CW5 5PS  
Tel: 01270 627702  
North & West Ward



Councillor Douglas Bowyer-Bates  
6 South Crofts, Nantwich,  
CW5 5SG  
Tel: 01270 629577  
North & West Ward



Councillor Penny Butterill  
21 Birch Lane, Nantwich,  
CW5 6JU  
Tel: 01270 625575  
North & West Ward



Councillor Peter Groves  
1 Yew Tree Close, Bulkeley,  
SY14 8DA  
Tel: 01829 720439  
South Ward



Councillor Ms Diana Hall  
17 Holland Walk, Nantwich,  
CW5 5US  
Tel: 01270 623530  
North & West Ward



Councillor Pam Kirkham  
35 Marsh Lane, Nantwich,  
CW5 5HP  
Tel: 01270 627999  
North & West Ward



Councillor John Lewis  
16 Lakeside View, Nantwich,  
CW5 7GA  
Tel: 01270 627507  
South Ward



Councillor Andrew Martin  
48 London Road, Stapeley,  
Nantwich, CW5 7JL  
Tel: 01270 627740  
South Ward

## INTRODUCING YOUR NEW COUNCILLOR



Councillor Philip Staley  
168 Audlem Road, Nantwich,  
CW5 7EB  
Tel: 01270 482642  
South Ward



Mr Ian Hope  
Town Clerk  
Civic Hall  
Market Street  
Nantwich  
CW5 5DG  
Tel: 01270 619224

## Welcome



I'm a great believer in Town Twinning, I feel it plays a very important role, it fosters friendship, both at the civic and personal level. It offers development of language skills and exposes participants to a different way of life and culture.

A friend from Poland asked whether I could get a pen-friend for her daughter, and my 10 year old granddaughter was keen to oblige. My granddaughter gets to practice creative writing, grammar and spelling, whilst her Polish friends practices her English. It's a win win situation.

Recently I've built on this idea and connected Leighton Academy in Crewe with a school (SP9) from Dzierzoniow and I understand a similar connection is being made between SP9 and Edleston Primary School.

It dawned on me that Nantwich may be missing out. So if you want a pen-friend ages 10+ please contact me through Nantwich Town Council, likewise if you are interested in finding out more information about Crewe & Nantwich Twinning Association.

Now I move on to inform you about an event that I feel is important to the town. The Modern Slavery Awareness Event takes place at Nantwich Civic Hall on Monday 19th November from 12noon until 3pm.

Slavery is the fastest growing organised crime in the world. It is hidden in plain sight and thrives with our communities and businesses.

To help raise knowledge and understanding on slavery and labour abuse, Nantwich Town Council, South Cheshire Chamber of Commerce and Libre Solutions Ltd invite you to this FREE awareness event.

To register visit [www.eventbrite.com](http://www.eventbrite.com) and search Nantwich Modern Slavery Awareness.

*David Marren*

## NANTWICH TREE OF LIGHT

On Sunday 4th November at 5pm people are invited to gather outside St Mary's Parish Rooms where a Tree of Light will be illuminated with a short service of prayer, hymns and poetry.

Rev. Dr Mark Hart will lead the service with an address from The Mayor of Nantwich Councillor David Marren, and a poem read by the Deputy Mayor of Nantwich Councillor Arthur Moran. The choir of St Mary's will be joining the proceedings.

Christmas is a time for families and friends, for celebrating and for giving; it also offers a chance to remember the loss of loved ones and to think about those less fortunate than ourselves.

On the lead up to the event, people are invited to make a donation of £5 to dedicate a bauble to a loved one or a special cause.

Donations can be made at Nantwich Civic Hall where you will be given the opportunity to fill a bauble with a name, message or items of your choice, which will then be hung

**MODERN SLAVERY AWARENESS EVENT**

SLAVERY IS THE FASTEST GROWING ORGANISED CRIME IN THE WORLD. IT'S HIDDEN IN PLAIN SIGHT & THRIVES WITHIN OUR COMMUNITIES & BUSINESSES

TO HELP RAISE KNOWLEDGE & UNDERSTANDING ON MODERN SLAVERY & LABOUR ABUSE, NANTWICH TOWN COUNCIL, SOUTH CHESHIRE CHAMBER OF COMMERCE & LIBRE SOLUTIONS LTD INVITE YOU TO A FREE AWARENESS EVENT.

**Nantwich Civic Centre**  
4 Market St, Nantwich, CW5 5DG  
Monday 19th November 2018  
12:00pm - 3:00pm

SIMPLY VISIT [WWW.EVENTBRITE.COM](http://WWW.EVENTBRITE.COM)

SEARCH - NANTWICH MODERN SLAVERY AWARENESS

**SECURE YOUR FREE PLACE**

"YOU MAY CHOOSE TO LOOK THE OTHER WAY, BUT YOU CAN NEVER SAY AGAIN THAT YOU DID NOT KNOW."  
WILLIAM WILBERFORCE, PRIOR TO THE ABOLITION VOTE, 1789

Logos: Nantwich Town Council, South Cheshire Chamber of Commerce, Libre Solutions, IS Libré, and others.

**The Mayor's Big Quiz**

**Friday 22nd March**

Groups of 6  
£10 per person  
Supper included

Hosted by **Chris Radford** in aid of  
Hope House, Nantwich First Responders  
& Nantwich Fire Cadets

Visit [www.nantwichtowncouncil.gov.uk](http://www.nantwichtowncouncil.gov.uk)  
for further information

on the tree of light until after the 12th night of Christmas, when the lights will be turned off and baubles removed.

Nantwich Town Council are leading the way by dedicating the first bauble to the late Councillor Norma Simpson who sadly passed away earlier this year.

In addition, names can be listed on Nantwich Town Council webpage of remembrance.

The full cost of the tree is covered by Nantwich Town Council and all donations will be divided between the Mayor's good causes; Hope House, Nantwich Fire Cadets, Nantwich First Responders and St Mary's Church.



# NANTWICH CHRISTMAS LIGHTS SWITCH ON

Sponsored by



**Friday 16th November**  
**Entertainment from 3.30pm, Switch-On 7.00pm**

## Nantwich Concert Band News



Nantwich Concert Band are looking for young musicians to join them in their Children In Need Concert.

Nantwich Wind Band (part of the Nantwich Concert Band organisation) are looking for young wind musicians who would like to take part in a concert for Children In Need on Saturday 17th November at Audlem Public Hall at 6.30pm. Joining the band for the evening will be Frazer School of Irish Dance and Nantwich Young Voices. This is a worthwhile opportunity to have fun playing music raising funds for a good cause. The Wind Band is for beginners or those wishing to play in a more relaxed atmosphere. Rehearsals are held at Brookfield Hall, Shrewbridge Road, Nantwich, CW5 7AD Wednesday evenings at 6pm to 7.15pm. There are also some new instruments offered free on loan to those wishing to play in the Wind Band. The main band follow the wind band rehearsals, on Wednesday evenings at 7.30pm to 9.15pm they also have vacancies for various sections.

For further information contact Musical Director Nick Birch on: nbirch@gmail.com or 07794369985

To find out more about the Band's latest news visit the website [www.nantwichband.co.uk](http://www.nantwichband.co.uk)



## Nantwich Police News Update



The Nantwich beat team was involved in numerous successful events throughout the summer in the area. Two of the major events the Nantwich Show and the Nantwich Food Festival were great successes with weather to match. It is always a privilege to work alongside the Town Council to support these events and get to meet the local community.

The town takes great pride in the summer flower displays around the town and it was with regret that some vandalism was reported to some displays this summer. The Nantwich in Bloom members do such a great job to make the town what it is, which makes this type of incident more annoying. The policing team investigated the matter and with the help of the town centre CCTV the offenders were identified. This led to significant compensation being paid to the Nantwich in Bloom members, and rightly so. This kind of behaviour will not be tolerated in Nantwich.

This summer has seen the arrival of three new support officers to our team and PCSO Barber, PCSO Barrington and PCSO Wallace have already become regular faces around the town. They along with the rest of the team will be working hard to keep the town and community safe, in partnership with Nantwich Town Council. As we head into the autumn we look forward to meeting the community and holding numerous police surgeries, should anyone wish to come along and meet the local officers.



# Talk OF THE Town

## CHRISTMAS CONCERT

The Nantwich Singers will be presenting a concert of Christmas Music including 2 choral suites and traditional Christmas Carols on Saturday December 8th at 7.30 pm in St Mary's Church, Nantwich.



Britten's "Ceremony of Carols" comprises of 11 movements with texts, principally in Middle English, taken from "The English Galaxy of Shorter Poems". Britten wrote the full choral version in 1943 - scored for 4-part choir and harp accompaniment which will be played by Lauren Scott who is well known to Nantwich audiences.

Rutter's "When Icicles Hang" uses secular texts from Elizabethan poets including Shakespeare, each of the six choral pieces dealing with images from the wintry season.

Tickets £10 will be available from the Church shop or on the door – further details on posters around town nearer the time!

**THE SECRET GARDEN**  
BY FRANCES HODGSON BURNETT  
ADAPTED BY JESSICA SWALE  
DIRECTED BY MICHAELA WARRILLOW

'A truly magical piece of theatre for all the family'

7th to 15th December 2018 at 7.45pm  
Matinée 15th December at 2.30pm

Tickets on sale 20th November

NANTWICH PLAYERS  
FOUNDED 1921



## Nantwich Museum Civil War Centre

"Empowerment of Women - a local perspective", Your Space Gallery, Tuesday 30 October - New Year.

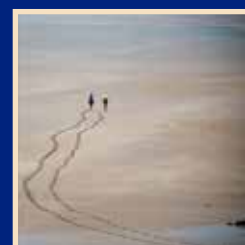
An exhibition celebrating the centenary of the earliest successes of the women's suffrage campaign. In 1918 women first got the right to vote in elections for Parliament, but only if they were property owners aged over 30. It was another ten years before all women could exercise this right in the same way as men. Also from 1918, women could stand for election to Parliament.



Their case for the campaign was strengthened during the First World War by women successfully taking on many jobs which had previously been done only by men, whilst the men went off to fight. When the war ended, women were prepared for a wider participation in public life.

These events are celebrated through the lives of three local women who, in different ways and at different times, took up the causes that the women's suffrage movement fought for: the writer and community activist Helen MacFarlane, champion of women's rights Ada Nield Chew, and most recently Gwyneth Dunwoody long-serving Member of Parliament for Crewe and Nantwich.

2018 Nantwich Camera Club Photographic Exhibition, Millennium Gallery, Wednesday 17 October 2018 - Saturday 5 January 2019



Featuring recent print and projected image work from members of the popular and successful club. Visitors are assured a wide range of truly inspiring subjects. As usual, they will be invited to choose their favourite photograph.



# Christmas

## IN THE Town

### Nantwich Santa Dash

Sunday 16 December 2018 @ 11:00

Continue the Christmas tradition of putting children first by bringing your friends and family to our 2018 Nantwich Santa Dash.

Every pound you raise will go directly towards helping some very special young people and their loved ones this Yuletide.

Walk, jog or run one of two distances - 2.5km or 5km - through Nantwich town centre.

Festive fancy dress is optional but there will be a prize for the best dressed!

There will also be mince pies, chocolate and medals at the finish line. Enter online £5 for adults and under 16s go free, or call the Fundraising Office on 01691 671 671 for more information.

Although there is no minimum sponsorship required we ask that you raise as much as you can!



Nantwich Rotary is once again collecting with their Float and could be coming near you! Look out for Santa on the following dates:

DAYTIME COLLECTIONS 10am - 16:00

Saturday 15 December - Market Square

Thursday 13 December - Morrisons with Brine Leas School Choir (am)

Thursday 18 December - M&S with Nantwich Academy School Choir (am)

EVENING COLLECTIONS - from 17:30pm

Thursday 06 December - Welsh Row

Monday 10 December - Queens Drive

Tuesday 11 December - Manor Road

Wednesday 12 December - Stapeley

Thursday 13 December - Shrewbridge Road

Monday 17 December - Cronkinson East

Tuesday 18 December - Cronkinson West

Wednesday 19 December - Queens Drive

Thursday 20 December - Wellington Road

### Christmas @ St Mary's Church



December 2  
9.30am  
6pm

Advent Sunday  
**Christingle Service**  
**Advent Service of Light**

December 9  
3pm

**Tots' Nativity Service**

December 16  
9.30am  
6pm

**All Age Nativity Service**  
**Festival of Nine Lessons & Carols**

December 24  
2pm, 3.30pm, 5pm  
11.30pm

Christmas Eve  
**Crib Service**  
**Midnight Communion**  
(Carols from 11pm)

December 25  
8am  
10am

Christmas Day  
**Holy Communion**  
**All Age Communion**

Stock up on hamper treats,  
fresh Christmas produce and  
beautifully crafted gifts at  
Nantwich's Markets

### Artisan Market

Saturday 10th December

### Farmers' Markets

Saturday 24th November

Saturday 22nd December

### CHRISTMAS & NEW YEAR OPENING HOURS Nantwich Market

Saturday 22nd December 9am - 4pm

Tuesday 25th December CLOSED

Thursday 27th December 9am - 3pm

Saturday 29th December 9am - 4pm

Tuesday 1st January CLOSED

Thursday 3rd January 9am - 4pm



### Etsy Made Local - South Cheshire Christmas Artisan Market

Looking for that perfect Christmas gift? Reaseheath Christmas Fair is back for 2018 on Saturday 1st December 10am - 4pm! This event is organised by the Events Management Students working with Etsy South Cheshire!

Free Entry

Mince pies and fruit punch!

Free gift wrapping

Free GOODY BAG for the first 50 adults!

Over 30 stalls full of handmade & vintage gifts...



# AT THE **Civic** .....

## November 2018

Thursday 1st	Table Top Sale
Friday 2nd	The Very Best In Stand Up Comedy
Saturday 3rd	The A Band Live
Sunday 4th	Beady Fair
Thursday 8th	Table Top Sale
Saturday 10th	Vintage Escapades Artisan Brocante
Monday 12th	Nantwich Film Club
Thursday 15th	Table Top Sale
Thursday 18th	V&A Antiques & Collectors Fair
Friday 19th	Modern Day Slavery Event
Friday 23rd	UK Bjorn – A Tribute to ABBA – SOLD OUT!
Monday 26th	Charity Bingo
Thursday 29th	Table Top Sale



## December 2018

Saturday 1st	FM
Sunday 2nd –	
Wednesday 5th	Santa's Sparkly Surprise
Thursday 6th	Table Top Sale
Friday 7th	The Very Best In Stand Up Comedy
Sunday 9th	Acton Amateur Operatics
Monday 10th	Nantwich Film Club
Thursday 13th	Table Top Sale
Friday 14th	80s Christmas Party – SOLD OUT!!!
Saturday 15th	Paul Larcome – Elvis Tribute
Thursday 20th	Table Top Sale
Friday 21st	Viva La Coldplay
New Year's Eve	New Years Eve Comedy Special



## Coming in 2019...

Friday 18th January	– Limehouse Lizzy
Sunday 20th January	– Quilters Exhibition
Friday 15th January	– Bon Jovi Forever
Saturday 16th March	– Meet the Beatles
Friday 26th April	– Through the Decades



Your Venue,  
Your Choice



Nantwich Civic Hall

Shows and events

Weddings and Civil Ceremonies

Fairs

Festivals

Conferences, training and  
corporate hire

Family parties and celebrations

Fitness activities



[www.nantwichtowncouncil.gov.uk](http://www.nantwichtowncouncil.gov.uk)

## Weekly Civic Events

### Tuesday

Short Mat Bowls	10.00am to noon
Table Tennis	1.30pm to 4.30pm
Ceroc	7.45pm to 11.00pm

### Wednesday

50+ Club	10am to noon
Sequence Tea Dance	1.15pm to 3.45pm
AC Fusion Dance	7.00pm to 10.30pm
- Modern Line Dancing	

### Thursday

Social Ballroom, Latin & Popular Sequence Dancing	7.45pm to 10.30pm
--	-------------------

**FREE entry to Tea Dances  
on Wednesday afternoons  
throughout December**



**01270 628633**  
[www.nantwichtowncouncil.gov.uk](http://www.nantwichtowncouncil.gov.uk)



**VIVA LA COLDPLAY**  
FRIDAY 21ST DECEMBER

"Viva La Coldplay are without doubt the best and most authentic Coldplay tribute band in the business"

**Doors Open 7.30pm**  
**Show Starts 8.30pm**  
**Tickets £10**



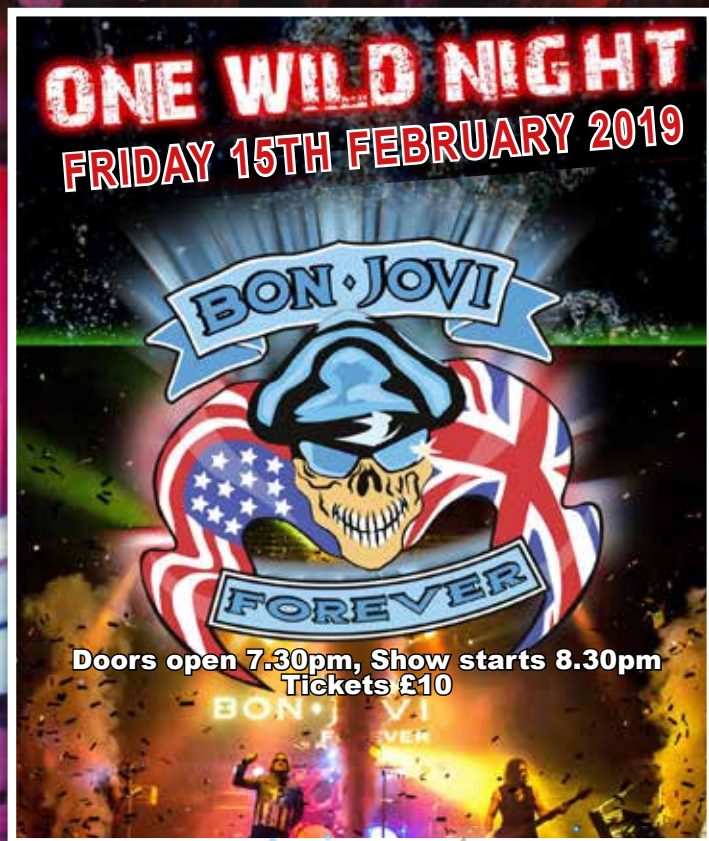
**NEW YEARS EVE AT NANTWICH CIVIC HALL**  
FROM 8PM, FOUR TOP STAND UP COMEDIANS TAKE TO THE STAGE FOLLOWED AT 10.30PM BY DJ, DANCEFLOOR, PHOTOBOOTH AND MORE

**BRENNAN REECE**  
**BARRY DODDS**  
**JAMIE SUTHERLAND**  
**STEPHEN GRANT**



**TIMEHOUSE LIZZY**

THE WORLDS BEST TRIBUTE TO THIN LIZZY  
FRIDAY 18TH JANUARY 2019  
DOORS 7.30PM / SHOW 8.30PM



**ONE WILD NIGHT**  
FRIDAY 15TH FEBRUARY 2019

**BON JOVI**  
**FOREVER**

**Doors open 7.30pm, Show starts 8.30pm**  
**Tickets £10**

**Sunday 2nd -  
Wednesday 5th  
December**

Join us to get the festive season off to a magical start by helping Rudolph and Mouse bring Christmas to the North Pole.

A fun show with lots of interaction and of course, the little ones get a present from Santa!

**Santa's  
SPARKLY  
SURPRISE**



AUTUMN 2018

GET IN TOUCH:

TEL: 01270 628 633

[www.nantwichtowncouncil.gov.uk](http://www.nantwichtowncouncil.gov.uk)

FOLLOW US:



[facebook.com/nantwichcivic](https://facebook.com/nantwichcivic)

[facebook.com/nantwichtouristinformation](https://facebook.com/nantwichtouristinformation)



[twitter.com/NantwichCivic](https://twitter.com/NantwichCivic)

[twitter.com/Nantwichtc](https://twitter.com/Nantwichtc)



# Looking Forward... 2019



## Battle Of Nantwich

**Saturday 26th January**

For over 40 years the faithful troops of The Sealed Knot have gathered in Nantwich to re-enact the bloody battle that took place almost 400 years ago and mark the end of the long and painful siege of the town. Full details of the event can be found at [www.battleofnantwich.co.uk](http://www.battleofnantwich.co.uk)



## Nantwich Markets

**Saturdays 13th April, 15th June, 17th August & 19th November**

Don't miss these four seasonal markets. Now in their 3rd year, they are proving very popular. Each market based in the town centre boasts over 35 stalls with an eclectic mix of produce, gifts and treats.



## Meet The Beatles

**Saturday 16th March**

Back at Nantwich Civic Hall by popular demand, the UK's most authentic Beatles tribute band will perform all your favourite hits. Tickets £10.