

Events

St Mary's Church lunch time concerts

Held every Thursday - 01270 625268

Ghost Walks

07952 984229 - www.crewetours.com

Nantwich Food and Drink Festival

25th - 27th September 2009 - Mill Island, Nantwich
www.nantwichfoodfestival.co.uk

Nantwich Words and Music Festival

8th - 11th October 2009 - Town Square -
www.wordsandmusicfestival.com

Holly Holy Day - 23rd January 2010

Nantwich Square - 01270 623984.

Nantwich Jazz Blues & Music Festival

2nd - 5th April 2010 - www.nantwichjazz.com

Celebration of St George's Day - 25th April 2010

Nantwich Town Square

Reaseheath College - Maize Maze - Summer Months

www.reaseheath.ac.uk

Willaston World Worm Charming Championships

June 2010 - www.wormcharming.com

Cholmondeley Castle Firework Concert and Military

Tattoo June 2010 - www.cholmondeleyfireworks.com

Cholmondeley Castle Pageant of Power

July 2010 - www.cpop.co.uk

Nantwich Show - July 2010 - www.nantwichshow.co.uk

Crewe Carnival Weekend - August 2010

Cholmondeley Castle - Classic car & bike show

September 2010 - www.cholmondeleycastle.com

Reaseheath College Apple Festival

October 2010 - www.reaseheath.ac.uk

Nantwich Farmers' Markets - Nantwich Town Square on the last Saturday in every month - 9am - 3pm

Nantwich Indoor Market - Market Hall - (Churchyard side & Market Street) Every Thursday - 8am - 1pm

Nantwich Tourist Information Centre

Civic Hall, Market Street, Nantwich, Cheshire CW5 5DG

E-mail: nantwichtic@cheshireeast.gov.uk

Tel: 01270 537359

Where helpful, knowledgeable staff will be happy to deal with any enquiries and provide friendly advice, information and a booking service for places to visit, events, quality assured accommodation and local transport in and around Nantwich and South Cheshire.

Opening Times:

Monday - Wednesday & Friday: 9am - 5pm

Thursday: 9am - 7pm

Saturday: 9am - 4pm

Looking for somewhere to stay?

Whatever your preferred style of accommodation you will find it in Nantwich and the surrounding areas from the best hotels to camping and caravan sites. You can be assured that wherever you choose your experience will be one of a high quality.

For more information please see www.visitcheshire.com or visit Nantwich Tourist Information Centre.

Accessibility

By public transport

Nantwich is on the Manchester/Crewe/Shrewsbury/Cardiff railway line: Arriva Trains Wales provide comfortable and convenient rail travel along this line.

Nearby Crewe station provides connections for Manchester, Liverpool, Chester, North Wales.

For information on all train times and fares call National Rail Enquiries on **08457 48 49 50** (textphone 0845 60 50 600).

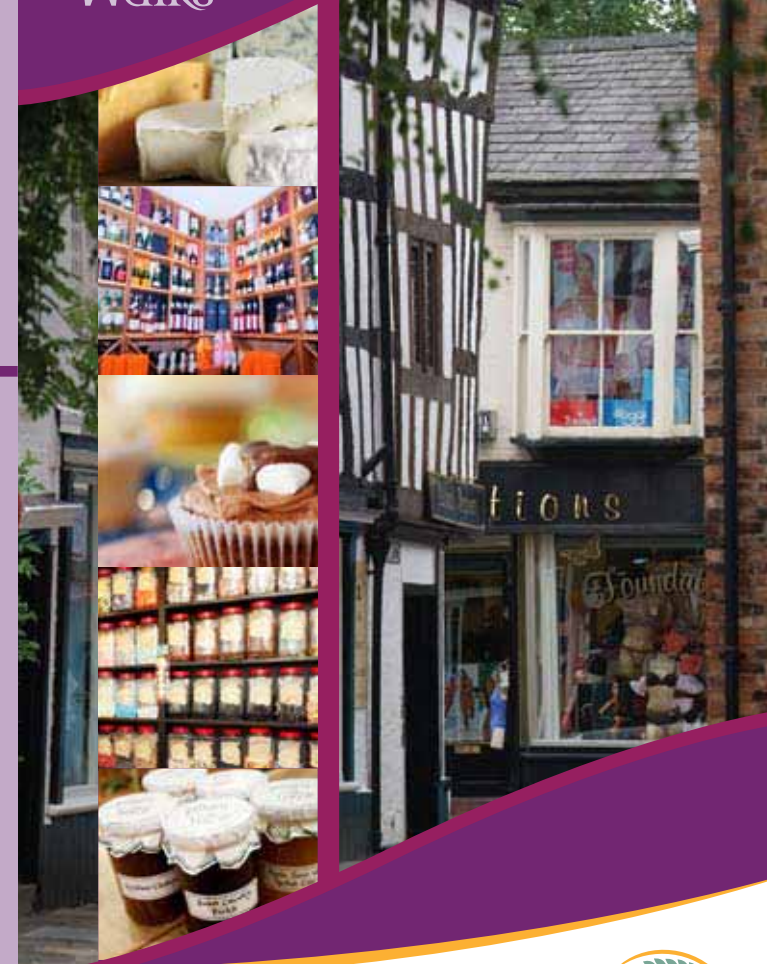
For all bus and rail information use Cheshire traveline, the public transport information line, on **0870 608 2 608**.

By car

You will have no trouble finding Nantwich as it is well signposted from all directions. If coming from the M6 leave at junction 16 and follow the A500 west direct to Nantwich (15 minutes).

taste Nantwich

Food & Drink Walks



For more information on events, visit

www.visitcheshire.com

Cheshire East Council -
Supporting Local Businesses


Cheshire East
Council



Nantwich

is a small market town, second only to Chester in the county for its wealth of historic buildings and today still retains much of its ancient character.

The Great Fire of 1583 destroyed much of the town but, its rebuilding has left a wealth of beautiful timber-framed buildings.

A settlement was established here by the Romans who produced salt from the naturally occurring brine springs. The town has had several names beginning with 'Hellath Wen' and was known to the Saxons as 'Warmundestrou' and by the Normans as 'Wich Malbanc'. In the 16th century it was known as 'Nantwych', in the 18th century 'Namptwych' and thereafter as 'Nantwich'.

In the Middle Ages Nantwich held an important central position in the country since it was the last outpost in the area before the Welsh border and more importantly, a major salt producing town. The salt was produced

from brine solution obtained from a spring along the River Weaver bank.

Several disasters have befallen the town over the years and the first recorded followed the Norman conquest in the 11th century when the town was totally destroyed with the exception of one building.

The second occurred when King Henry III, the first sovereign known to have visited the town, destroyed it to prevent the Welsh using it and its salt spring.

The town was rebuilt once more, only for the marauding Welsh armies to attack several times during the middle ages.

Probably the best-recorded disaster is the Great Fire of 1583, which, encouraged by constant winds, lasted for 20 days and destroyed most of the town. Four bears, released for their own safety from their cage in the town's bear pit, considerably hampered the fire-fighting operations. Miraculously, three of the town's finest buildings escaped the Great Fire - the Parish Church, Sweetbriar Hall and Churche's Mansion. The fire did not affect the houses on the West side of the River along Welsh Row.

An ongoing turbulent and bloody period was during the Civil War when Nantwich was the only town in Cheshire to declare for Parliament. The town was constantly besieged by Royalist troops. One particular siege lasting for six weeks until 25th January 1644 when Sir Thomas (General) Fairfax joined forces



with Sir William Brereton and engaged and defeated Byron's army. Nantwich people celebrated the victory by wearing sprigs of holly in their hair and hats, and the day became known as 'Holly Holy Day'. A colourful re-enactment of the Battle is normally held on the Saturday closest to the 25th of January each year.

Nantwich is fast becoming one of the region's Gourmet Capitals. With its famous Food and Drink Festival, celebrated Farmers' Market and renowned food shops, it is a destination of choice for the region's food lovers.

The County of Cheshire offers so much to tempt your palate - world famous Cheshire cheese, over fifty flavours of ice cream, organically and home reared meats, chutneys and jams, fresh trout, speciality breads and confectionary, artisan chocolates, bottle conditioned beers, and even English wine! All of this produce and much, much more is available from Nantwich's speciality shops and markets.

Follow our walks around Nantwich and see for yourself!

For more information about food trails or food events around Nantwich and Cheshire please visit www.tastecheshire.com

For more information about things to do and places to stay please visit www.visitcheshire.com

Walk 1

1



The Residence Restaurant and Bar – opened in 2007, includes a cocktail bar, restaurant, private hire suite and alfresco garden terrace, set over two beautifully designed floors.

9 Mill Street, Nantwich CW5 5ST
01270 629100 www.residenceuk.com

2



Fruition – Fruit and vegetable juice bar. Also selling fresh fruit platters and real hand-baked muffins.

4b Mill Street, Nantwich CW5 5ST
01270 620680

3



Ginger & Pickles – A coffee shop where you can buy scrummy homemade cakes, a champagne breakfast, healthy & wholesome kids' meals and delicious teas and coffees. **3a, Mill Street, Nantwich CW5 5ST** 01270 625318 www.gingerandpickles.co.uk

4



Homemade – Delicious cakes, homespun treasures and craft courses

3, Mill Street, Nantwich CW5 5ST
01270 625318 www.homemadeuk.com

5



Rodney Densem Wines – An extensive selection of quality and affordable wines and spirits from around the world. Regular in-store tutored tastings. Hand-made chocolates. External tastings by request (corporate or private events catered for, please ask for details) Christmas Selection coming soon.

4 Pillory Street, Nantwich CW5 5BD 01270 626 999
www.rodneydensemwines.com

6



Pillory House Café – One of Nantwich's hidden treasures offering morning coffees, hot and cold lunches and afternoon teas. **18 Pillory Street, Nantwich CW5 5BD** 01270 623 524 www.pilloryhouse.co.uk

7



Nantwich Museum - Telling the story of Nantwich through the ages. You will also find the Cheese Room, a permanent exhibition featuring the cheese making industry of South Cheshire.

Pillory St, Nantwich, Cheshire, CW5 5BQ www.nantwichmuseum.org.uk

8



Café de Paris – A coffee shop and terrace offering excellent coffee, light lunches and afternoon teas.

Chapel Court, Hospital Street, Nantwich 01270 620 180 www.lecafedeparis.co.uk

9



Bon Amis – Traditional and modern European dishes, freshly prepared using the finest quality ingredients served in a friendly "home from home" environment. **90 Hospital St Nantwich, Cheshire CW5 5RP** 01270 628347

10



A.T Welch – Established in 1922 as a pork butcher, and expanded selling foods from around the world. Famous sausages are handmade daily on the premises, with pies, cooked meats, cheese, tea, coffee and other speciality foods also being sold **45 Hospital Street, Nantwich, CW5 5RL** 01270 625491 www.atwelch.co.uk

11



AROMA Café Bar – New stylish continental Coffee House, offering Fair Trade coffee, fresh savoury and sweet food. Internet terminals and WIFI access **7 Hospital Street, Nantwich.** 01270 620 442 aromacafebar@aol.com

12



Edencroft Wine and Brookshaws of Nantwich – Edencroft Fine Wines offer a wide-ranging selection of champagne, wine and distilled spirits. Brookshaws of Nantwich is home of the finest fresh meat, supplying only the best quality meat available in Britain. **8 – 10 Hospital Street, Nantwich, CW5 5RJ** 01270 625302. www.brookshaws.co.uk

13




The AGA Shop - Part of the Aga Food Service Group. Retail outlet selling high quality British made cast iron cookers & cookware. We also hold Aga Cookery classes here on the premises. **3 Hospital Street, Nantwich CW5 5RH** 01270 623133 www.aga-web.co.uk



Walk 2



1



Nantwich Book Shop & Coffee House – Recently refurbished bookshop and coffee lounge, a feature of which is the original Tudor oak panelling.
The Square Nantwich 01270 619831
www.nantwichbookshop.co.uk

2



Chatwins – Coffee bar and café featuring the full range of award winning savoury products, sandwiches and cakes.
The Square, Nantwich 01270 625688
www.chatwins.co.uk

3



The Crown Hotel & Restaurant – 16th Century Coaching Inn located in the centre of this historic market town recently refurbished featuring original oak beams and log fires
High Street, Nantwich CW5 5AS
01270 625 283
www.crownhotelnantwich.com

4



Mr Simms Olde Sweet Shop – Discovering a Mr Simm's Olde Sweet Shop creates a nostalgic atmosphere that encourages customers to search out their favourite sweets from childhood memories!
3 The Crown Mews, High Street, Nantwich CW5 5AU

5



Harrisons – Established in 2000, Harrisons was the first café-bar to open in Nantwich, and gained a popular reputation for stylish comfort and personal service.
1 High Street, Nantwich CW5 5AW
01270 626066

6



The Cat – Hotel, Bar and Restaurant – Contemporary setting offering informal dining and drinking to a wide range of tastes. Modern English cuisine using fresh produce. Modern hotel rooms.
Welsh Row, Nantwich CW5 5ED
01270 623020

7



McCormick's – Specialising in breads baked on the premises. light snacks including pasta dishes and crepes, espresso and cappuccino, coffees and teas. There is also a Snugbury's Jersey Ice Cream Parlour.
34 Pepper Street, Nantwich CW5 5AB.
01270 628451

8



Harvey's – Harvey's sandwich & espresso bar have now become the leading chain of sandwich shops in South Cheshire, with the emphasis on fresh food and fabulous coffee.
19 Pepper Street, Nantwich CW5 5AB 01270 624240
www.harveysandwiches.co.uk

9



H Clewlow Butchers – A High Street shop supplying beef, lamb and pork from the local area. Also specialists in award winning pies and sausages, kitchen ready meals and English wine and preserves.
8 Pepper Street, Nantwich, CW5 5AB
01270 625366 www.clewlovs.co.uk

10



Les's Fish Bar – Newly opened award winning Fish and Chip shop and restaurant.
14 Pepper Street, Nantwich, CW5 5AB
01270 611948

11



The Cheeseboard – A traditional cheese stall open Thursday and Saturday throughout the year, with a large range of British and Continental cheeses, plus specials
The Market Hall, Nantwich
01270 665545.

Please check opening times with individual venues prior to your visit as these may vary.

